

Anti-CDH17 antibody (1-100) [S6MR] (STJ11102306)

GENERAL INFORMATION

Product Type	Primary antibodies
Applications	WB/IHC-P/IF/ICC/ELISA
Host / Source	Rabbit
Reactivity	Human/Mouse/Rat

PRODUCT PROPERTIES

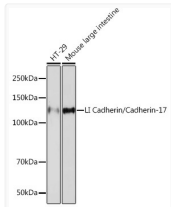
Clonality	Monoclonal
Concentration	Lot specific
Conjugation	Unconjugated
Purification	Affinity purification
Dilution Range	WB:1:1000-1:2000 IHC-P:1:200-1:2000 IF/CC:1:100-1:1000 ELISA:Recommended starting concentration is 1 μ g/mL. Please optimize the concentration based on your specific assay requirements.
Formulation	PBS with 0.02% Sodium Azide, 0.05% BSA, 50% Glycerol, pH 7.3.
Isotype	IgG
Molecular Weight	Protein Mw: 92kDa Observed Mw: 120kDa
Storage Instruction	Store at -20°C for up to 1 year from the date of receipt, and avoid repeat freeze-thaw cycles.

TARGET INFORMATION

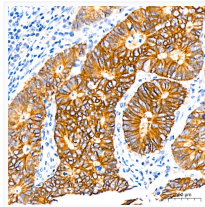
Gene ID	1015
Gene Symbol	CDH17
UniProt ID	CAD17_HUMAN
Immunogen Region	1-100
Immunogen Sequence	MILQAHLHSLCLLMLYLATG YGQEGKFSGLPKPMTFSIYE GQEPSQIIFQFKANPPAVTF ELTGETDNIFVIEREGLLYY NRALDRETRSTHNLQVAALD
Specificity	A synthetic peptide corresponding to a sequence within amino acids 1-100 of human LI Cadherin/Cadherin-17 (Q12864).

ADDITIONAL INFORMATION

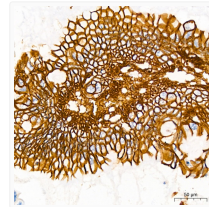
Note **STRICTLY FOR FURTHER SCIENTIFIC RESEARCH USE ONLY (RUO). MUST NOT TO BE USED IN DIAGNOSTIC OR THERAPEUTIC APPLICATIONS.**



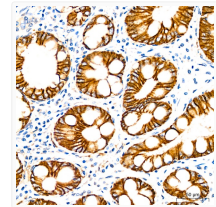
Western blot analysis of extracts of various cell lines, using LI Cadherin/Cadherin-17 rabbit monoclonal antibody (STJ11102306) at 1:1000 dilution. Secondary antibody: HRP Goat Anti-rabbit IgG (H+L) (STJS000856) at 1:10000 dilution. Lysates/proteins: 25 μ g per lane. Blocking buffer: 3% non-fat dry milk in TBST. Detection: ECL Basic Kit. Exposure time: 90s.



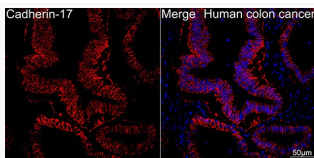
Immunohistochemistry analysis of paraffin-embedded human gastric cancer using LI Cadherin/Cadherin-17 rabbit monoclonal antibody (STJ11102306) at dilution of 1:200 (40x lens). Perform high pressure antigen retrieval with 10 mM Tris/EDTA buffer pH 9.0 before commencing with immunohistochemistry staining protocol.



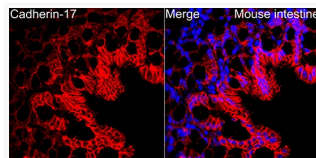
Immunohistochemistry analysis of paraffin-embedded Human pancreatic ductal carcinoma using LI Cadherin/Cadherin-17 rabbit monoclonal antibody (STJ11102306) at dilution of 1:200 (40x lens). Perform high pressure antigen retrieval with 10 mM Tris/EDTA buffer pH 9.0 before commencing with immunohistochemistry staining protocol.



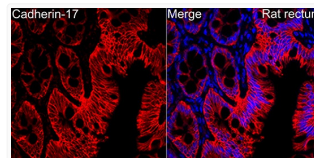
Immunohistochemistry analysis of paraffin-embedded human stomach using LI Cadherin/Cadherin-17 rabbit monoclonal antibody (STJ11102306) at dilution of 1:200 (40x lens). Perform high pressure antigen retrieval with 10 mM Tris/EDTA buffer pH 9.0 before commencing with immunohistochemistry staining protocol.



Confocal imaging of Human colon cancer using LI Cadherin/Cadherin-17 rabbit monoclonal antibody (STJ11102306, dilution 1:100) (Red). DAPI was used for nuclear staining (blue). Objective: 40x.



Immunofluorescence analysis of mouse Intestine using LI Cadherin/Cadherin-17 rabbit monoclonal antibody (STJ11102306) at dilution of 1:100 (40x lens). Blue: DAPI for nuclear staining.



Immunofluorescence analysis of rat rectum using LI Cadherin/Cadherin-17 rabbit monoclonal antibody (STJ11102306) at dilution of 1:100 (40x lens). Blue: DAPI for nuclear staining.