

## Anti-ELF3 antibody (1-371) [S4MR] (STJ11102304)

### GENERAL INFORMATION

Product Type	Primary antibodies
Applications	WB/ELISA/ChIP/CUT&Tag
Host / Source	Rabbit
Reactivity	Human/Mouse/Rat

### PRODUCT PROPERTIES

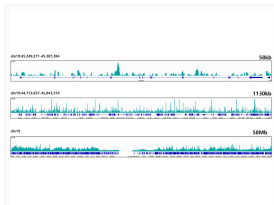
Clonality	Monoclonal
Concentration	Lot specific
Conjugation	Unconjugated
Purification	Affinity purification
Dilution Range	WB:1:1000-1:6000 ELISA:Recommended starting concentration is 1 Mu g/mL. Please optimize the concentration based on your specific assay requirements. ChIP:5 Mu g antibody for 10 Mu g-15 Mu g of Chromatin CUT&Tag: 10 <sup>6</sup> cells/1 Mu g
Formulation	PBS with 0.02% Sodium Azide, 0.05% BSA, 50% Glycerol, pH 7.3.
Isotype	IgG
Molecular Weight	Protein Mw: 41kDa Observed Mw: 42kDa
Storage Instruction	Store at -20°C for up to 1 year from the date of receipt, and avoid repeat freeze-thaw cycles.

### TARGET INFORMATION

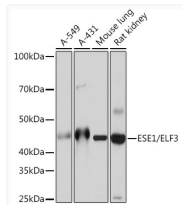
Gene ID	<a href="#">1999</a>
Gene Symbol	<a href="#">ELF3</a>
UniProt ID	<a href="#">ELF3_HUMAN</a>
Immunogen Region	1-371
Immunogen Sequence	MAATCEISNIFSNYFSAMYS SEDSTLASVPPAATFGADDL VLTLNPMQMSLEGTEKASWL GEQPQFWSKTQVLDWISYQV EKNKYDASAIIDFSRCDMDGA TLCNCALEELRLVFGPLGDQ LHAQLRDLTSSSSDELSWII ELLEKDGMAFQEALDPGPFD QGSPFAQELLDDGQQASPYH PGSCGAGAPSPGSSDVSTAG TGASRSSHSSDSGGSDVDLD PTDGKLFPSDGFRRDCKKGD
Specificity	Recombinant fusion protein containing a sequence corresponding to amino acids 1-371 of human ESE1/ELF3 (P78545).

### ADDITIONAL INFORMATION

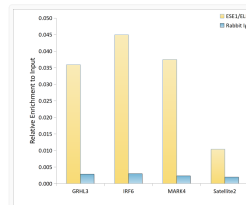
Note STRICTLY FOR FURTHER SCIENTIFIC RESEARCH USE ONLY (RUO). MUST NOT TO BE USED IN DIAGNOSTIC OR THERAPEUTIC APPLICATIONS.



CUT&Tag was performed using the CUT&Tag Assay Kit (pAG-Tn5) for Illumina (RK20265) from 10<sup>6</sup> HepG5 with 1 Mu g ESE1 (STJ11102304) , along with a Goat Anti-rabbit IgG (H+L). The CUT&Tag results indicate the enrichment pattern of ESE1 in representative gene loci (MARK4) , as shown in figure.



Western blot analysis of extracts of various cell lines, using ESE1/ELF3 rabbit monoclonal antibody (STJ11102304) at 1:1000 dilution. Secondary antibody: HRP Goat Anti-rabbit IgG (H+L) (STJS000856) at 1:10000 dilution. Lysates/proteins: 25 Mu g per lane. Blocking buffer: 3% non-fat dry milk in TBST. Detection: ECL Basic Kit. Exposure time: 10s.



Chromatin immunoprecipitation analysis of extracts of HepG2 cells, using ESE1/ELF3 antibody (STJ11102304) and rabbit IgG. The amount of immunoprecipitated DNA was checked by quantitative PCR. Histogram was constructed by the ratios of the immunoprecipitated DNA to the input.