

## Anti-KIFAP3 antibody (675-792) [S7MR] (STJ11102297)

### GENERAL INFORMATION

Product Type	Primary antibodies
Applications	WB/IF/ICC/ELISA
Host / Source	Rabbit
Reactivity	Human/Mouse/Rat

### PRODUCT PROPERTIES

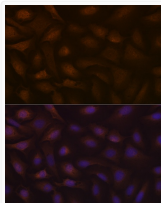
Clonality	Monoclonal
Concentration	Lot specific
Conjugation	Unconjugated
Purification	Affinity purification
Dilution Range	WB:1:500-1:1000 IF/CC:1:50-1:200 ELISA:Recommended starting concentration is 1 Mu g/mL. Please optimize the concentration based on your specific assay requirements.
Formulation	PBS with 0.02% Sodium Azide, 0.05% BSA, 50% Glycerol, pH 7.3.
Isotype	IgG
Molecular Weight	Protein Mw: 91kDa Observed Mw: 100kDa
Storage Instruction	Store at -20°C for up to 1 year from the date of receipt, and avoid repeat freeze-thaw cycles.

### TARGET INFORMATION

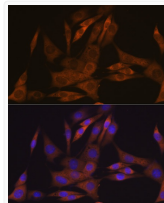
Gene ID	<a href="#">22920</a>
Gene Symbol	<a href="#">KIFAP3</a>
UniProt ID	<a href="#">KIFA3_HUMAN</a>
Immunogen Region	675-792
Immunogen Sequence	KFRWHNSQWLEMVESRQMDSE SEQYLYGDDRIEPIYHEGDI LERPDLFYNSDGLIASEGAI SPDFFNHYHLQNGDVVGQHS FPGSLGMDGFGQPVGILGRP ATAYGFRPDEPYYYGYGS
Specificity	Recombinant fusion protein containing a sequence corresponding to amino acids 675-792 of human KIFAP3 (Q92845).

### ADDITIONAL INFORMATION

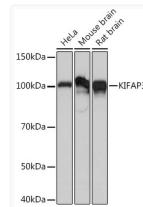
Note **STRICTLY FOR FURTHER SCIENTIFIC RESEARCH USE ONLY (RUO). MUST NOT TO BE USED IN DIAGNOSTIC OR THERAPEUTIC APPLICATIONS.**



Immunofluorescence analysis of U-2 OS cells using KIFAP3 Rabbit monoclonal antibody (STJ11102297) at dilution of 1:100 (40x lens). Blue: DAPI for nuclear staining.



Immunofluorescence analysis of NIH-3T3 cells using KIFAP3 Rabbit monoclonal antibody (STJ11102297) at dilution of 1:100 (40x lens). Blue: DAPI for nuclear staining.



Western blot analysis of extracts of various cell lines, using KIFAP3 Rabbit monoclonal antibody (STJ11102297) at 1:1000 dilution. Secondary antibody: HRP Goat Anti-Rabbit IgG (H+L) (STJS000856) at 1:10000 dilution. Lysates/proteins: 25 Mu g per lane. Blocking buffer: 3% nonfat dry milk in TBST. Detection: ECL Basic Kit. Exposure time: 3s.