

Anti-PIAS2 antibody (50-150) [S1MR] (STJ11102291)

GENERAL INFORMATION

Product Type	Primary antibodies
Applications	WB/ELISA
Host / Source	Rabbit
Reactivity	Mouse/Rat

PRODUCT PROPERTIES

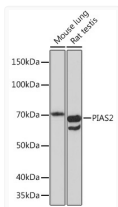
Clonality	Monoclonal
Concentration	Lot specific
Conjugation	Unconjugated
Purification	Affinity purification
Dilution Range	WB:1:500-1:1000 ELISA:Recommended starting concentration is 1 Mu g/mL. Please optimize the concentration based on your specific assay requirements.
Formulation	PBS with 0.02% Sodium Azide, 0.05% BSA, 50% Glycerol, pH 7.3.
Isotype	IgG
Molecular Weight	Protein Mw: 45kDa/6368kDa/68kDa Observed Mw: 68kDa
Storage Instruction	Store at -20°C for up to 1 year from the date of receipt, and avoid repeat freeze-thaw cycles.

TARGET INFORMATION

Gene ID	9063
Gene Symbol	PIAS2
UniProt ID	PIAS2_HUMAN
Immunogen Region	50-150
Immunogen Sequence	SPAVQIKIRELYRRRYPRTL EGLSDLSTIKSSVFLDGGG SPVEPDLAVAGIHSLPSTSV TPHSPSSPVGSVLLQDTKPT FEMQQPSPPIPPVHPDVQLK N
Specificity	A synthetic peptide corresponding to a sequence within amino acids 50-150 of human PIAS2 (NP_004662.2).

ADDITIONAL INFORMATION

Note STRICTLY FOR FURTHER SCIENTIFIC RESEARCH USE ONLY (RUO). MUST NOT TO BE USED IN DIAGNOSTIC OR THERAPEUTIC APPLICATIONS.



Western blot analysis of extracts of various cell lines, using PIAS2 Rabbit monoclonal antibody (STJ11102291) at 1:1000 dilution. Secondary antibody: HRP Goat Anti-Rabbit IgG (H+L) (STJS000856) at 1:10000 dilution. Lysates/proteins: 25 Mu g per lane. Blocking buffer: 3% nonfat dry milk in TBST. Detection: ECL Basic Kit. Exposure time: 3min.