

Anti-IGF2BP2 antibody (500-595) [S8MR] (STJ11102288)

GENERAL INFORMATION

| | |
|---------------|--------------------|
| Product Type | Primary antibodies |
| Applications | WB/IHC-P/IP/ELISA |
| Host / Source | Rabbit |
| Reactivity | Human |

PRODUCT PROPERTIES

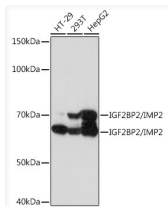
| | |
|---------------------|---|
| Clonality | Monoclonal |
| Concentration | Lot specific |
| Conjugation | Unconjugated |
| Purification | Affinity purification |
| Dilution Range | WB:1:1000-1:4000 IHC-P:1:100-1:1000 IP:0.5 Mu g-4 Mu g antibody for 200 Mu g-400 Mu g extracts of whole cells ELISA:Recommended starting concentration is 1 Mu g/mL. Please optimize the concentration based on your specific assay requiremen |
| Formulation | PBS with 0.02% Sodium Azide, 0.05% BSA, 50% Glycerol, pH 7.3. |
| Isotype | IgG |
| Molecular Weight | Protein Mw: 66kDa/62kDa Observed Mw: 65kDa/70kDa |
| Storage Instruction | Store at -20°C for up to 1 year from the date of receipt, and avoid repeat freeze-thaw cycles. |

TARGET INFORMATION

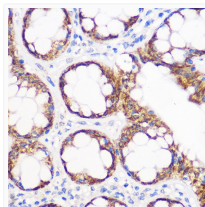
| | |
|--------------------|---|
| Gene ID | 10644 |
| Gene Symbol | IGF2BP2 |
| UniProt ID | IF2B2_HUMAN |
| Immunogen Region | 500-595 |
| Immunogen Sequence | NFFNPKEEVKLEAHIRVPSS TAGRVIGKGGKTVNELQNL SAEVIVPRDQTPDENEVIV RIIGHFFASQTAQRKIREIV QQVKQEQKYPQGVAS |
| Specificity | Recombinant fusion protein containing a sequence corresponding to amino acids 500-595 of human IGF2BP2/IMP2 (NP_001007226.1). |

ADDITIONAL INFORMATION

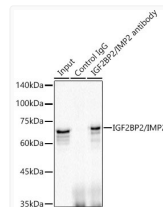
Note **STRICTLY FOR FURTHER SCIENTIFIC RESEARCH USE ONLY (RUO). MUST NOT TO BE USED IN DIAGNOSTIC OR THERAPEUTIC APPLICATIONS.**



Western blot analysis of extracts of various cell lines, using IGF2BP2/IGF2BP2/IMP2 rabbit monoclonal antibody (STJ11102288) at 1:1000 dilution. Secondary antibody: HRP Goat Anti-rabbit IgG (H+L) (STJS000856) at 1:10000 dilution. Lysates/proteins: 25 Mu g per lane. Blocking buffer: 3% non-fat dry milk in TBST. Detection: ECL Basic Kit. Exposure time: 30s.



Immunohistochemistry analysis of paraffin-embedded human colon using IGF2BP2/IGF2BP2/IMP2 rabbit monoclonal antibody (STJ11102288) at dilution of 1:100 (40x lens). Perform microwave antigen retrieval with 10 mM Tris/EDTA buffer pH 9.0 before commencing with immunohistochemistry staining protocol.



Immunoprecipitation analysis of 300 Mu g extracts of HepG2 cells using 3 Mu g IGF2BP2/IMP2 antibody (STJ11102288). Western blot was performed from the immunoprecipitate using IGF2BP2/IMP2 antibody (STJ11102288) at a dilution of 1:1000.