

Anti-RAD52 antibody (319-418) [S7MR] (STJ11102287)

GENERAL INFORMATION

Product Type	Primary antibodies
Applications	WB/ELISA
Host / Source	Rabbit
Reactivity	Human

PRODUCT PROPERTIES

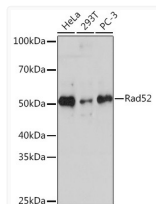
Clonality	Monoclonal
Concentration	Lot specific
Conjugation	Unconjugated
Purification	Affinity purification
Dilution Range	WB:1:500-1:1000 ELISA:Recommended starting concentration is 1 Mu g/mL. Please optimize the concentration based on your specific assay requirements.
Formulation	PBS with 0.02% Sodium Azide, 0.05% BSA, 50% Glycerol, pH 7.3.
Isotype	IgG
Molecular Weight	Protein Mw: 13kDa/15kDa/25kDa/46kDa Observed Mw: 50kDa
Storage Instruction	Store at-20°C for up to 1 year from the date of receipt, and avoid repeat freeze-thaw cycles.

TARGET INFORMATION

Gene ID	5893
Gene Symbol	RAD52
UniProt ID	RAD52_HUMAN
Immunogen Region	319-418
Immunogen Sequence	QELIKTLEDNSEKWAVTPDA GDGVVVKPSSRADPAQTSDDL ALNNQMVTQNRTPHSVCHQK PQAKSGSWDLQTYSDQRRTT GNWESHRSQDMKKRKYDPS
Specificity	A synthetic peptide corresponding to a sequence within amino acids 319-418 of human Rad52 (P43351).

ADDITIONAL INFORMATION

Note STRICTLY FOR FURTHER SCIENTIFIC RESEARCH USE ONLY (RUO). MUST NOT TO BE USED IN DIAGNOSTIC OR THERAPEUTIC APPLICATIONS.



Western blot analysis of extracts of various cell lines, using Rad52 Rabbit monoclonal antibody (STJ11102287) at 1:1000 dilution. Secondary antibody: HRP Goat Anti-Rabbit IgG (H+L) (STJS000856) at 1:10000 dilution. Lysates/proteins: 25 Mu g per lane. Blocking buffer: 3% nonfat dry milk in TBST. Detection: ECL Basic Kit. Exposure time: 3min.