

Anti-PLCG2 antibody (700-800) [S6MR] (STJ11102286)

GENERAL INFORMATION

Product Type	Primary antibodies
Applications	WB/IF/ICC/ELISA
Host / Source	Rabbit
Reactivity	Human/Mouse/Rat

PRODUCT PROPERTIES

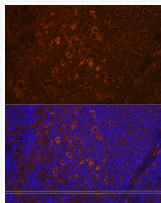
Clonality	Monoclonal
Concentration	Lot specific
Conjugation	Unconjugated
Purification	Affinity purification
Dilution Range	WB:1:500-1:1000 IF/CC:1:50-1:200 ELISA:Recommended starting concentration is 1 μ g/mL. Please optimize the concentration based on your specific assay requirements.
Formulation	PBS with 0.02% Sodium Azide, 0.05% BSA, 50% Glycerol, pH 7.3.
Isotype	IgG
Molecular Weight	Protein Mw: 148kDa Observed Mw: 150kDa
Storage Instruction	Store at -20°C for up to 1 year from the date of receipt, and avoid repeat freeze-thaw cycles.

TARGET INFORMATION

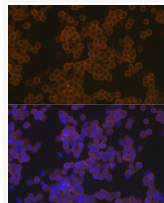
Gene ID	5336
Gene Symbol	PLCG2
UniProt ID	PLCG2_HUMAN
Immunogen Region	700-800
Immunogen Sequence	RHFVLGTSAYFESLVELVSY YEKHSLYRKMLRLYPVTPPEL LERYNMRDINSLYDVSRMY VDPSEINPSPMQRTVKALYD YKAKRSDELSCFRGALIHNV S
Specificity	A synthetic peptide corresponding to a sequence within amino acids 700-800 of human PLC gamma 2 (PLC gamma 2 (PLCG2)) (P16885).

ADDITIONAL INFORMATION

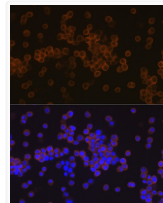
Note STRICTLY FOR FURTHER SCIENTIFIC RESEARCH USE ONLY (RUO). MUST NOT TO BE USED IN DIAGNOSTIC OR THERAPEUTIC APPLICATIONS.



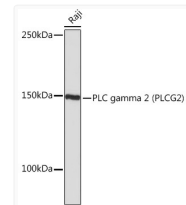
Immunofluorescence analysis of paraffin-embedded rat spleen using PLC gamma 2 (PLCG2) Rabbit monoclonal antibody (STJ11102286) at dilution of 1:100 (40x lens). Secondary antibody: Cy3 Goat Anti-Rabbit IgG (H+L) at 1:500 dilution. Blue: DAPI for nuclear staining.



Immunofluorescence analysis of THP-1 cells using PLC gamma 2 (PLCG2) Rabbit monoclonal antibody (STJ11102286) at dilution of 1:100 (40x lens). Secondary antibody: Cy3 Goat Anti-Rabbit IgG (H+L) at 1:500 dilution. Blue: DAPI for nuclear staining.



Immunofluorescence analysis of Raw 264.7 cells using PLC gamma 2 (PLCG2) Rabbit monoclonal antibody (STJ11102286) at dilution of 1:100 (40x lens). Secondary antibody: Cy3 Goat Anti-Rabbit IgG (H+L) at 1:500 dilution. Blue: DAPI for nuclear staining.



Western blot analysis of lysates from Raji cells, using PLC gamma 2 (PLCG2) Rabbit monoclonal antibody (STJ11102286) at 1:1000 dilution. Secondary antibody: HRP Goat Anti-Rabbit IgG (H+L) (STJS000856) at 1:10000 dilution. Lysates/proteins: 25 μ g per lane. Blocking buffer: 3% nonfat dry milk in TBST. Detection: ECL Basic Kit. Exposure time: 10s.