

## Anti-GCK antibody (271-421) [S1MR] (STJ11102281)

### GENERAL INFORMATION

Product Type	Primary antibodies
Applications	WB/IP/ELISA
Host / Source	Rabbit
Reactivity	Human/Mouse/Rat

### PRODUCT PROPERTIES

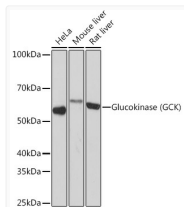
Clonality	Monoclonal
Concentration	Lot specific
Conjugation	Unconjugated
Purification	Affinity purification
Dilution Range	WB:1:1000-1:4000 IP:0.5 Mu g-4 Mu g antibody for 200 Mu g-400 Mu g extracts of whole cells ELISA:Recommended starting concentration is 1 Mu g/mL. Please optimize the concentration based on your specific assay requirements.
Formulation	PBS with 0.02% Sodium Azide, 0.05% BSA, 50% Glycerol, pH 7.3.
Isotype	IgG
Molecular Weight	Protein Mw: 52kDa Observed Mw: 52kDa
Storage Instruction	Store at -20°C for up to 1 year from the date of receipt, and avoid repeat freeze-thaw cycles.

### TARGET INFORMATION

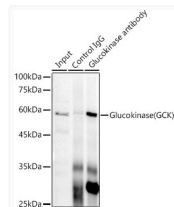
Gene ID	<a href="#">2645</a>
Gene Symbol	<a href="#">GCK</a>
UniProt ID	<a href="#">HXK4_HUMAN</a>
Immunogen Region	271-421
Immunogen Sequence	LEYDRLVDESSANPGQQLYE KLIGGKYMGEVLVLLRLV DENLLFHGEASEQLRTRGAF ETRFVSVQVESDTGDRKQIYN ILSTLGLRPSSTTDCDIVRRA CESVSTRAAHMCSAGLAGVI NRMRESRSEDVMRITVGVDG SVYKLHPSFKE
Specificity	Recombinant fusion protein containing a sequence corresponding to amino acids 271-421 of human Glucokinase (GCK) (P35557).

### ADDITIONAL INFORMATION

Note **STRICTLY FOR FURTHER SCIENTIFIC RESEARCH USE ONLY (RUO). MUST NOT TO BE USED IN DIAGNOSTIC OR THERAPEUTIC APPLICATIONS.**



Western blot analysis of extracts of various cell lines, using Glucokinase (GCK) (GCK) rabbit monoclonal antibody (STJ11102281) at 1:1000 dilution. Secondary antibody: HRP Goat Anti-rabbit IgG (H+L) (STJS000856) at 1:10000 dilution. Lysates/proteins: 25 Mu g per lane. Blocking buffer: 3% non-fat dry milk in TBST. Detection: ECL Basic Kit. Exposure time: 30s.



Immunoprecipitation analysis of 300 Mu g extracts of HeLa cells using 3 Mu g Glucokinase (GCK) antibody (STJ11102281). Western blot was performed from the immunoprecipitate using Glucokinase (GCK) antibody (STJ11102281) at a dilution of 1:1000.