

Anti-ADA antibody (250-350) [S6MR] (STJ11102276)

GENERAL INFORMATION

Product Type	Primary antibodies
Applications	WB/ELISA
Host / Source	Rabbit
Reactivity	Human/Mouse/Rat

PRODUCT PROPERTIES

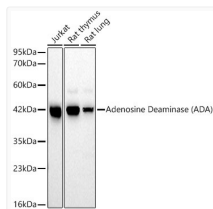
Clonality	Monoclonal
Concentration	Lot specific
Conjugation	Unconjugated
Purification	Affinity purification
Dilution Range	WB:1:500-1:1000 ELISA:Recommended starting concentration is 1 µg/mL. Please optimize the concentration based on your specific assay requirements.
Formulation	PBS with 0.02% Sodium Azide, 0.05% BSA, 50% Glycerol, pH 7.3.
Isotype	IgG
Molecular Weight	Protein Mw: 41kDa Observed Mw: 41kDa
Storage Instruction	Store at -20°C for up to 1 year from the date of receipt, and avoid repeat freeze-thaw cycles.

TARGET INFORMATION

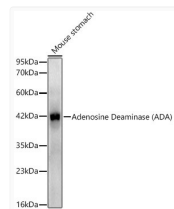
Gene ID	100
Gene Symbol	ADA
UniProt ID	ADA_HUMAN
Immunogen Region	250-350
Immunogen Sequence	NRLRQENMHFEICPWSSYLT GAWKPDTEHAVIRLKNQDQAN YSLNTDDPLIFKSTLDTDYQ MTKRDMGFTEEEFKRLNINA AKSSFLPEDEKRELLDLYK A
Specificity	A synthetic peptide corresponding to a sequence within amino acids 250-350 of human Adenosine Deaminase (ADA) (NP_000013.2).

ADDITIONAL INFORMATION

Note **STRICTLY FOR FURTHER SCIENTIFIC RESEARCH USE ONLY (RUO). MUST NOT TO BE USED IN DIAGNOSTIC OR THERAPEUTIC APPLICATIONS.**



Western blot analysis of various lysates, using Adenosine Deaminase (ADA) rabbit monoclonal antibody (STJ11102276) at 1:1000 dilution. Secondary antibody: HRP Goat Anti-rabbit IgG (H+L) (STJS000856) at 1:10000 dilution. Lysates/proteins: 25 µg per lane. Blocking buffer: 3% non-fat dry milk in TBST. Detection: ECL Basic Kit. Exposure time: 60s.



Western blot analysis of mouse stomach, using Adenosine Deaminase (ADA) rabbit monoclonal antibody (STJ11102276) at 1:1000 dilution. Secondary antibody: HRP Goat Anti-rabbit IgG (H+L) (STJS000856) at 1:10000 dilution. Lysates/proteins: 25 µg per lane. Blocking buffer: 3% non-fat dry milk in TBST. Detection: ECL Enhanced Kit. Exposure time: 45s.