

## Anti-LDHB antibody (1-100) [S7MR] (STJ11102267)

### GENERAL INFORMATION

Product Type	Primary antibodies
Applications	WB/IHC-P/IP/ELISA
Host / Source	Rabbit
Reactivity	Human/Rat

### PRODUCT PROPERTIES

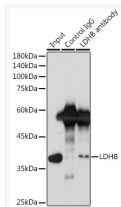
Clonality	Monoclonal
Concentration	Lot specific
Conjugation	Unconjugated
Purification	Affinity purification
Dilution Range	WB:1:500-1:2000 IHC-P:1:50-1:200 IP:0.5 Mu g-4 Mu g antibody for 200 Mu g-400 Mu g extracts of whole cells ELISA:Recommended starting concentration is 1 Mu g/mL. Please optimize the concentration based on your specific assay requirements.
Formulation	PBS with 0.02% Sodium Azide, 0.05% BSA, 50% Glycerol, pH 7.3.
Isotype	IgG
Molecular Weight	Protein Mw: 37kDa Observed Mw: 36kDa
Storage Instruction	Store at -20°C for up to 1 year from the date of receipt, and avoid repeat freeze-thaw cycles.

### TARGET INFORMATION

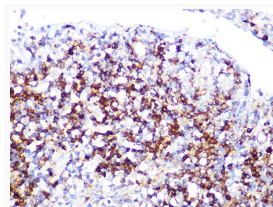
Gene ID	<a href="#">3945</a>
Gene Symbol	<a href="#">LDHB</a>
UniProt ID	<a href="#">LDHB_HUMAN</a>
Immunogen Region	1-100
Immunogen Sequence	MATLKEKLIAPVAEEEEATVP NNKITVVGVGQVGMACAISI LGKSLADELALVDVLEDKLG GEMMDLQHGSFLQTPKIVA DKDYSVTANSKIVVVTAGVR
Specificity	A synthetic peptide corresponding to a sequence within amino acids 1-100 of human LDHB (P07195).

### ADDITIONAL INFORMATION

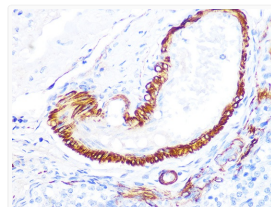
Note STRICTLY FOR FURTHER SCIENTIFIC RESEARCH USE ONLY (RUO). MUST NOT TO BE USED IN DIAGNOSTIC OR THERAPEUTIC APPLICATIONS.



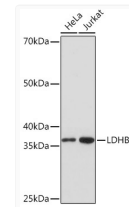
Immunoprecipitation analysis of 300 Mu g extracts of Jurkat cells using 3 Mu g LDHB antibody (STJ11102267). Western blot was performed from the immunoprecipitate using LDHB antibody (STJ11102267) at a dilution of 1:1000.



Immunohistochemistry analysis of LDHB in paraffin-embedded human appendix using LDHB Rabbit monoclonal antibody (STJ11102267) at dilution of 1:100 (40x lens). Perform microwave antigen retrieval with 10 mM PBS buffer pH 7.2 before commencing with immunohistochemistry staining protocol.



Immunohistochemistry analysis of LDHB in paraffin-embedded rat ovary using LDHB Rabbit monoclonal antibody (STJ11102267) at dilution of 1:100 (40x lens). Perform microwave antigen retrieval with 10 mM PBS buffer pH 7.2 before commencing with immunohistochemistry staining protocol.



Western blot analysis of various lysates using LDHB Rabbit monoclonal antibody (STJ11102267) at 1:1000 dilution. Secondary antibody: HRP Goat Anti-Rabbit IgG (H+L) (STJS000856) at 1:10000 dilution. Lysates/proteins: 25 Mu g per lane. Blocking buffer: 3% nonfat dry milk in TBST. Detection: ECL Basic Kit. Exposure time: 5s.