

Anti-PA2G4 antibody (300-394) [S9MR] (STJ11102259)

GENERAL INFORMATION

Product Type	Primary antibodies
Applications	WB/IHC-P/IF/ICC/ELISA
Host / Source	Rabbit
Reactivity	Human/Mouse/Rat

PRODUCT PROPERTIES

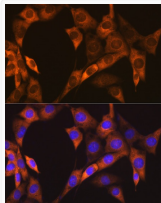
Clonality	Monoclonal
Concentration	Lot specific
Conjugation	Unconjugated
Purification	Affinity purification
Dilution Range	WB:1:500-1:1000 IHC-P:1:500-1:1000 IF/ICC:1:50-1:200 ELISA:Recommended starting concentration is 1 Mu g/mL. Please optimize the concentration based on your specific assay requirements.
Formulation	PBS with 0.02% Sodium Azide, 0.05% BSA, 50% Glycerol, pH 7.3.
Isotype	IgG
Molecular Weight	Protein Mw: 44kDa Observed Mw: 45kDa
Storage Instruction	Store at -20°C for up to 1 year from the date of receipt, and avoid repeat freeze-thaw cycles.

TARGET INFORMATION

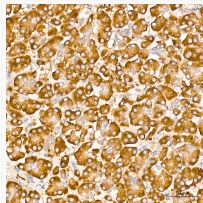
Gene ID	5036
Gene Symbol	PA2G4
UniProt ID	PA2G4_HUMAN
Immunogen Region	300-394
Immunogen Sequence	ELLQPFNVLYEKEGEFVAQF KFTVLLMPNGPMRITSGPFE PDLYKSEMEVQDAELKALLQ SSASRKTKKTKKTKKASKTAE NATSGETLEENEAGD
Specificity	Recombinant fusion protein containing a sequence corresponding to amino acids 300-394 of human EBP1/PA2G4 (NP_006182.2).

ADDITIONAL INFORMATION

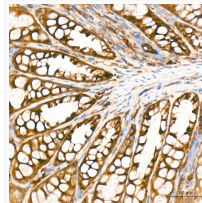
Note **STRICTLY FOR FURTHER SCIENTIFIC RESEARCH USE ONLY (RUO). MUST NOT TO BE USED IN DIAGNOSTIC OR THERAPEUTIC APPLICATIONS.**



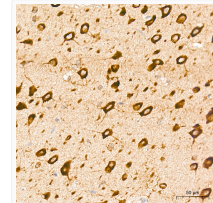
Immunofluorescence analysis of NIH-3T3 cells using EBP1/PA2G4 Rabbit monoclonal antibody (STJ11102259) at dilution of 1:100 (40x lens). Secondary antibody: Cy3 Goat Anti-Rabbit IgG (H+L) at 1:500 dilution. Blue: DAPI for nuclear staining.



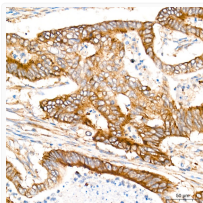
Immunohistochemistry analysis of EBP1/PA2G4 in paraffin-embedded human pancreas tissue using EBP1/PA2G4 Rabbit monoclonal antibody (STJ11102259) at a dilution of 1:800 (40x lens). High pressure antigen retrieval was performed with 0.01 M citrate buffer (pH 6.0) prior to immunohistochemistry staining.



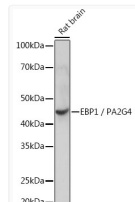
Immunohistochemistry analysis of EBP1/PA2G4 in paraffin-embedded mouse colon tissue using EBP1/PA2G4 Rabbit monoclonal antibody (STJ11102259) at a dilution of 1:800 (40x lens). High pressure antigen retrieval was performed with 0.01 M citrate buffer (pH 6.0) prior to immunohistochemistry staining.



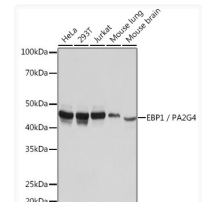
Immunohistochemistry analysis of EBP1/PA2G4 in paraffin-embedded rat brain tissue using EBP1/PA2G4 Rabbit monoclonal antibody (STJ11102259) at a dilution of 1:800 (40x lens). High pressure antigen retrieval was performed with 0.01 M citrate buffer (pH 6.0) prior to immunohistochemistry staining.



Immunohistochemistry analysis of EBP1/PA2G4 in paraffin-embedded human colon carcinoma tissue using EBP1/PA2G4 Rabbit monoclonal antibody (STJ11102259) at a dilution of 1:800 (40x lens). High pressure antigen retrieval was performed with 0.01 M citrate buffer (pH 6.0) prior to immunohistochemistry staining.



Western blot analysis of lysates from Rat brain, using EBP1/PA2G4 Rabbit monoclonal antibody (STJ11102259) at 1:1000 dilution. Secondary antibody: HRP Goat Anti-Rabbit IgG (H+L) (STJS000856) at 1:10000 dilution. Lysates/proteins: 25 Mu g per lane. Blocking buffer: 3% nonfat dry milk in TBST. Detection: ECL Basic Kit. Exposure time: 10s.



Western blot analysis of various lysates using EBP1/PA2G4 Rabbit monoclonal antibody (STJ11102259) at 1:1000 dilution. Secondary antibody: HRP Goat Anti-Rabbit IgG (H+L) (STJS000856) at 1:10000 dilution. Lysates/proteins: 25 Mu g per lane. Blocking buffer: 3% nonfat dry milk in TBST. Detection: ECL Basic Kit. Exposure time: 3s.