

Anti-CRYAA antibody (6-95) [S7MR] (STJ11102257)

GENERAL INFORMATION

Product Type	Primary antibodies
Applications	WB/IF/ICC/ELISA
Host / Source	Rabbit
Reactivity	Mouse/Rat

PRODUCT PROPERTIES

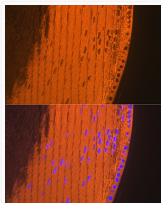
Clonality	Monoclonal
Concentration	Lot specific
Conjugation	Unconjugated
Purification	Affinity purification
Dilution Range	WB:1:500-1:2000 IF/CC:1:50-1:200 ELISA:Recommended starting concentration is 1 μ g/mL. Please optimize the concentration based on your specific assay requirements.
Formulation	PBS with 0.02% Sodium Azide, 0.05% BSA, 50% Glycerol, pH 7.3.
Isotype	IgG
Molecular Weight	Protein Mw: 20kDa Observed Mw: 18kDa
Storage Instruction	Store at -20°C for up to 1 year from the date of receipt, and avoid repeat freeze-thaw cycles.

TARGET INFORMATION

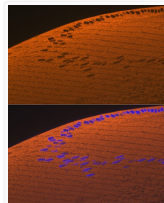
Gene ID	102724652/1409
Gene Symbol	CRYAA
UniProt ID	CRYAA_HUMAN
Immunogen Region	6-95
Immunogen Sequence	QHPWFKRTLGPFPYPSRLFDQ FFGEGLEFYDLLPFLSSTIS PYYRQSLFRFTVLDGSGISEVR SDRDKFVIFLDVKHFSPEL TVKVQDDFVE
Specificity	Recombinant fusion protein containing a sequence corresponding to amino acids 6-95 of human CRYAA (P02489).

ADDITIONAL INFORMATION

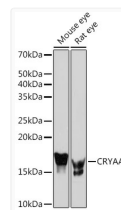
Note STRICTLY FOR FURTHER SCIENTIFIC RESEARCH USE ONLY (RUO). MUST NOT TO BE USED IN DIAGNOSTIC OR THERAPEUTIC APPLICATIONS.



Immunofluorescence analysis of mouse eye using CRYAA Rabbit monoclonal antibody (STJ11102257) at dilution of 1:100 (40x lens). Blue: DAPI for nuclear staining.



Immunofluorescence analysis of rat eye using CRYAA Rabbit monoclonal antibody (STJ11102257) at dilution of 1:100 (40x lens). Blue: DAPI for nuclear staining.



Western blot analysis of extracts of various cell lines, using CRYAA Rabbit monoclonal antibody (STJ11102257) at 1:1000 dilution. Secondary antibody: HRP Goat Anti-Rabbit IgG (H+L) (STJS000856) at 1:10000 dilution. Lysates/proteins: 25 μ g per lane. Blocking buffer: 3% nonfat dry milk in TBST. Detection: ECL Basic Kit. Exposure time: 60s.