

Anti-PSMA3 antibody (21-150) [S9MR] (STJ11102249)

GENERAL INFORMATION

Product Type	Primary antibodies
Applications	WB/IHC-P/ELISA
Host / Source	Rabbit
Reactivity	Human/Mouse/Rat

PRODUCT PROPERTIES

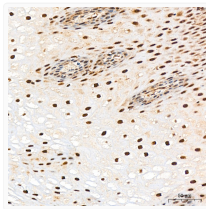
Clonality	Monoclonal
Concentration	Lot specific
Conjugation	Unconjugated
Purification	Affinity purification
Dilution Range	WB:1:1000-1:5000 IHC-P:1:500-1:1000 ELISA:Recommended starting concentration is 1 Mu g/mL. Please optimize the concentration based on your specific assay requirements.
Formulation	PBS with 0.02% Sodium Azide, 0.05% BSA, 50% Glycerol, pH 7.3.
Isotype	IgG
Molecular Weight	Protein Mw: 28kDa Observed Mw: 28kDa
Storage Instruction	Store at -20°C for up to 1 year from the date of receipt, and avoid repeat freeze-thaw cycles.

TARGET INFORMATION

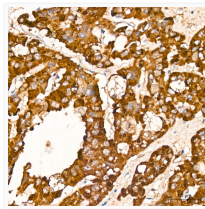
Gene ID	5684
Gene Symbol	PSMA3
UniProt ID	PSA3_HUMAN
Immunogen Region	21-150
Immunogen Sequence	VFQVEYAMKA VENSSTAIGI RCKDGVVFGVEKLVLSKLYE EGSNKRLFNVDRHVGMAVAG LLADARSLADIAREEASNFR SNFGYNIPLKHLADR VAMYV HAYTLYSAVRPF GCSFMLGS YSVNDGAQLY
Specificity	Recombinant fusion protein containing a sequence corresponding to amino acids 21-150 of human PSMA3 (P25788).

ADDITIONAL INFORMATION

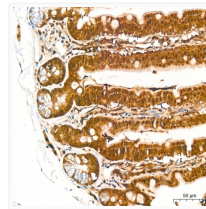
Note STRICTLY FOR FURTHER SCIENTIFIC RESEARCH USE ONLY (RUO). MUST NOT TO BE USED IN DIAGNOSTIC OR THERAPEUTIC APPLICATIONS.



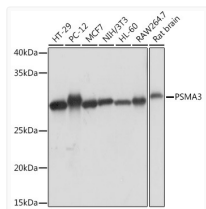
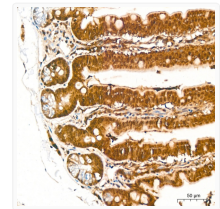
Immunohistochemistry analysis of PSMA3 in paraffin-embedded human esophagus tissue using PSMA3 Rabbit monoclonal antibody (STJ11102249) at a dilution of 1:1000 (40x lens). High pressure antigen retrieval was performed with 0.01 M citrate buffer (pH 6.0) prior to immunohistochemistry staining.



Immunohistochemistry analysis of PSMA3 in paraffin-embedded human liver cancer tissue using PSMA3 Rabbit monoclonal antibody (STJ11102249) at a dilution of 1:1000 (40x lens). High pressure antigen retrieval was performed with 0.01 M citrate buffer (pH 6.0) prior to immunohistochemistry staining.



Immunohistochemistry analysis of PSMA3 in paraffin-embedded mouse colon tissue using PSMA3 Rabbit monoclonal antibody (STJ11102249) at a dilution of 1:1000 (40x lens). High pressure antigen retrieval was performed with 0.01 M citrate buffer (pH 6.0) prior to immunohistochemistry staining.



Western blot analysis of various lysates using PSMA3 Rabbit monoclonal antibody (STJ11102249) at 1:1000 dilution. Secondary antibody: HRP Goat Anti-Rabbit IgG (H+L) (STJS000856) at 1:10000 dilution. Lysates/proteins: 25 Mu g per lane. Blocking buffer: 3% nonfat dry milk in TBST. Detection: ECL Basic Kit. Exposure time: 1s.