

Anti-TEAD1 antibody (174-263) [S8MR] (STJ11102248)

GENERAL INFORMATION

Product Type	Primary antibodies
Applications	WB/ELISA
Host / Source	Rabbit
Reactivity	Human

PRODUCT PROPERTIES

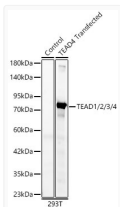
Clonality	Monoclonal
Concentration	Lot specific
Conjugation	Unconjugated
Purification	Affinity purification
Dilution Range	WB:1:1000-1:5000 ELISA:Recommended starting concentration is 1 Mu g/mL. Please optimize the concentration based on your specific assay requirements.
Formulation	PBS with 0.02% Sodium Azide, 0.05% BSA, 50% Glycerol, pH 7.3.
Isotype	IgG
Molecular Weight	Protein Mw: 48, 48, 49, 47kDa Observed Mw: 50, 53, 55, 60kDa/70-90kDa/70-90kDa
Storage Instruction	Store at-20°C for up to 1 year from the date of receipt, and avoid repeat freeze-thaw cycles.

TARGET INFORMATION

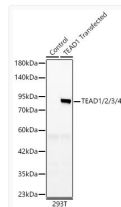
Gene ID	7003 8463 7005 TEAD1 TEAD2 TEAD1_HUMAN TEAD2_HUMAN TEAD3_HUMAN
Immunogen Region	174-263
Immunogen Sequence	SHDVKPFSSQQTAVQPPLPL PGFESPAGPAPSPSAPPAPP WQGRSVASSKLMWLEFSAFL EQQQDPDTYNKHLFVHIGQS SPSYSDPYLE
Specificity	Recombinant fusion protein containing a sequence corresponding to amino acids 174-263 of human TEAD4 (NP_003204.2)

ADDITIONAL INFORMATION

Note **STRICTLY FOR FURTHER SCIENTIFIC RESEARCH USE ONLY (RUO). MUST NOT TO BE USED IN DIAGNOSTIC OR THERAPEUTIC APPLICATIONS.**



Western blot analysis of lysates from wild type (WT) and 293T cells transfected with TEAD1 using TEAD1/2/3/4 monoclonal antibody (STJ11102248) at 1:1000 dilution. Secondary antibody:HRP Goat Anti-Rabbit IgG (H+L) (STJS000856) at 1:10000 dilution. Lysates/proteins: 25 Mu g per lane. Blocking buffer: 3% nonfat dry milk in TBST. Detection:ECL Basic Kit. Exposuretime: 10s.



Western blot analysis of various lysates using TEAD1 Rabbit monoclonal antibody (STJ11102248) at 1:3000 dilution. Secondary antibody: HRP Goat Anti-Rabbit IgG (H+L) (STJS000856) at 1:10000 dilution. Lysates/proteins: 25 Mu g per lane. Blocking buffer: 3% nonfat dry milk in TBST. Detection: ECL Basic Kit. Exposure time: 1min.