

## Anti-UPF1 antibody (1-100) [S0MR] (STJ11102240)

### GENERAL INFORMATION

Product Type	Primary antibodies
Applications	WB/IF/ICC/IP/ELISA
Host / Source	Rabbit
Reactivity	Human/Mouse/Rat

### PRODUCT PROPERTIES

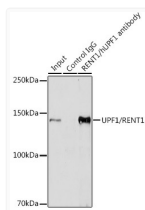
Clonality	Monoclonal
Concentration	Lot specific
Conjugation	Unconjugated
Purification	Affinity purification
Dilution Range	WB:1:1000-1:6000 IF/CC:1:50-1:200 IP:0.5 Mu g-4 Mu g antibody for 200 Mu g-400 Mu g extracts of whole cells ELISA:Recommended starting concentration is 1 Mu g/mL. Please optimize the concentration based on your specific assay requirement
Formulation	PBS with 0.02% Sodium Azide, 0.05% BSA, 50% Glycerol, pH 7.3.
Isotype	IgG
Molecular Weight	Protein Mw: 124kDa Observed Mw: 140kDa
Storage Instruction	Store at -20°C for up to 1 year from the date of receipt, and avoid repeat freeze-thaw cycles.

### TARGET INFORMATION

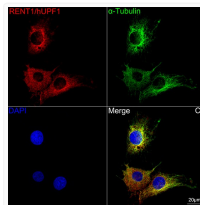
Gene ID	<a href="#">5976</a>
Gene Symbol	<a href="#">UPF1</a>
UniProt ID	<a href="#">RENT1_HUMAN</a>
Immunogen Region	1-100
Immunogen Sequence	MSVEAYGPSSQTLTFLDTEE AELLGADTQGSEFEFTDFTL PSQTQTPPGGPGGGGGAG GPGGAGAGAAAGQLDAQVGP EGILQNGAVDDSVAKTSQLL
Specificity	A synthetic peptide corresponding to a sequence within amino acids 1-100 of human UPF1/RENT1 (Q92900).

### ADDITIONAL INFORMATION

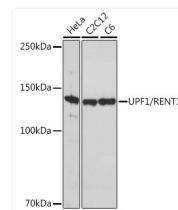
Note STRICTLY FOR FURTHER SCIENTIFIC RESEARCH USE ONLY (RUO). MUST NOT TO BE USED IN DIAGNOSTIC OR THERAPEUTIC APPLICATIONS.



Immunoprecipitation analysis of 300 Mu g extracts of HeLa cells using 3 Mu g UPF1/RENT1 antibody (STJ11102240). Western blot was performed from the immunoprecipitate using UPF1/RENT1 antibody (STJ11102240) at a dilution of 1:1000.



Confocal imaging of C6 cells using UPF1/RENT1 Rabbit monoclonal antibody (STJ11102240, dilution 1:100) followed by a further incubation with Cy3 Goat Anti-Rabbit IgG (H+L) (dilution 1:500) (Red). The cells were counterstained with Alpha-Tubulin Mouse monoclonal antibody (dilution 1:400) followed by incubation with ABflo® 488-conjugated Goat Anti-Mouse IgG (H+L) antibody (dilution 1:500) (Green). DAPI was used for nuclear staining (Blue). Objective: 100x.



Western blot analysis of various lysates using UPF1/RENT1 Rabbit monoclonal antibody (STJ11102240) at 1:1000 dilution. Secondary antibody: HRP Goat Anti-Rabbit IgG (H+L) (STJS000856) at 1:10000 dilution. Lysates/proteins: 25 Mu g per lane. Blocking buffer: 3% nonfat dry milk in TBST. Detection: ECL Basic Kit. Exposure time: 10s.