

Anti-SUMO2 antibody (1-95) [S6MR] (STJ11102236)

GENERAL INFORMATION

Product Type	Primary antibodies
Applications	WB/IHC-P/IF/ICC/ELISA
Host / Source	Rabbit
Reactivity	Human/Mouse/Rat

PRODUCT PROPERTIES

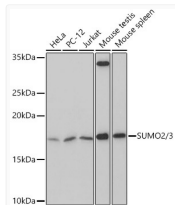
Clonality	Monoclonal
Concentration	Lot specific
Conjugation	Unconjugated
Purification	Affinity purification
Dilution Range	WB:1:100-1:500 IHC-P:1:200-1:2000 IF/CC:1:50-1:200 ELISA:Recommended starting concentration is 1 µg/mL. Please optimize the concentration based on your specific assay requirements.
Formulation	PBS with 0.02% Sodium Azide, 0.05% BSA, 50% Glycerol, pH 7.3.
Isotype	IgG
Molecular Weight	Protein Mw: 16kDa Observed Mw: 17kDa
Storage Instruction	Store at -20°C for up to 1 year from the date of receipt, and avoid repeat freeze-thaw cycles.

TARGET INFORMATION

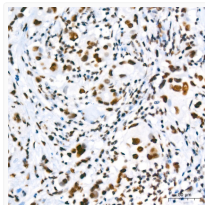
Gene ID	6613 6612
Gene Symbol	SUMO2 SUMO3
UniProt ID	SUMO2_HUMAN SUMO3_HUMAN
Immunogen Region	1-95
Immunogen Sequence	MADEKPKEGVKTENNDHINL KVAGQDGSVVQFKIKRHPTL SKLMKAYCERQGLSMRQIRF RFDGQPINETDTPAQLEMED EDTIDVFQQQTGGVY
Specificity	A synthetic peptide corresponding to a sequence within amino acids 1-95 of human SUMO2/3 (P61956).

ADDITIONAL INFORMATION

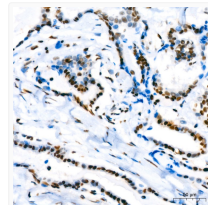
Note STRICTLY FOR FURTHER SCIENTIFIC RESEARCH USE ONLY (RUO). MUST NOT TO BE USED IN DIAGNOSTIC OR THERAPEUTIC APPLICATIONS.



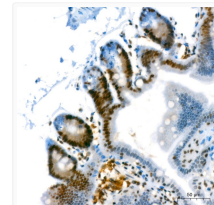
Western blot analysis of extracts of various cell lines, using SUMO2/3 rabbit monoclonal antibody (STJ11102236) at 1:500 dilution. Secondary antibody: HRP Goat Anti-rabbit IgG (H+L) (STJS000856) at 1:10000 dilution. Lysates/proteins: 25 µg per lane. Blocking buffer: 3% non-fat dry milk in TBST. Detection: ECL Basic Kit. Exposure time: 3min.



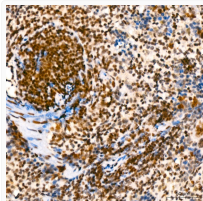
Immunohistochemistry analysis of paraffin-embedded human breast cancer using SUMO2/3 rabbit monoclonal antibody (STJ11102236) at dilution of 1:200 (40x lens). Perform high pressure antigen retrieval with 10 mM Tris/EDTA buffer pH 9.0 before commencing with immunohistochemistry staining protocol.



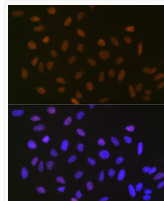
Immunohistochemistry analysis of paraffin-embedded human thyroid cancer using SUMO2/3 rabbit monoclonal antibody (STJ11102236) at dilution of 1:200 (40x lens). Perform high pressure antigen retrieval with 10 mM Tris/EDTA buffer pH 9.0 before commencing with immunohistochemistry staining protocol.



Immunohistochemistry analysis of paraffin-embedded mouse intestine using SUMO2/3 rabbit monoclonal antibody (STJ11102236) at dilution of 1:200 (40x lens). Perform high pressure antigen retrieval with 10 mM Tris/EDTA buffer pH 9.0 before commencing with immunohistochemistry staining protocol.



Immunohistochemistry analysis of paraffin-embedded mouse spleen using SUMO2/3 rabbit monoclonal antibody (STJ11102236) at dilution of 1:200 (40x lens). Perform high pressure antigen retrieval with 10 mM Tris/EDTA buffer pH 9.0 before commencing with immunohistochemistry staining protocol.



Immunofluorescence analysis of U-2 OS cells using SUMO2/3 rabbit monoclonal antibody (STJ11102236) at dilution of 1:100 (40x lens). Blue: DAPI for nuclear staining.