

## Anti-FURIN antibody (200-300) [S1MR] (STJ11102231)

### GENERAL INFORMATION

Product Type	Primary antibodies
Applications	WB/ELISA
Host / Source	Rabbit
Reactivity	Human/Mouse

### PRODUCT PROPERTIES

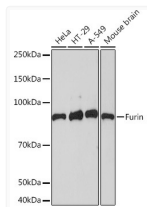
Clonality	Monoclonal
Concentration	Lot specific
Conjugation	Unconjugated
Purification	Affinity purification
Dilution Range	WB:1:500-1:2000 ELISA:Recommended starting concentration is 1 µg/mL. Please optimize the concentration based on your specific assay requirements.
Formulation	PBS with 0.02% Sodium Azide, 0.05% BSA, 50% Glycerol, pH 7.3.
Isotype	IgG
Molecular Weight	Protein Mw: 87kDa Observed Mw: 90kDa
Storage Instruction	Store at -20°C for up to 1 year from the date of receipt, and avoid repeat freeze-thaw cycles.

### TARGET INFORMATION

Gene ID	<a href="#">5045</a>
Gene Symbol	<a href="#">FURIN</a>
UniProt ID	<a href="#">FURIN_HUMAN</a>
Immunogen Region	200-300
Immunogen Sequence	GEVAAVANNGVCGVGVAYNA RIGGVRMLDGEVTDAVEARS LGLNPNHIHIYSASWGPEDD GKTVDGPARLAEEAFFRGVS QGRGGLGSIFVWASGNGGRE H
Specificity	A synthetic peptide corresponding to a sequence within amino acids 200-300 of human Furin (P09958).

### ADDITIONAL INFORMATION

Note STRICTLY FOR FURTHER SCIENTIFIC RESEARCH USE ONLY (RUO). MUST NOT TO BE USED IN DIAGNOSTIC OR THERAPEUTIC APPLICATIONS.



Western blot analysis of various lysates using Furin Rabbit monoclonal antibody (STJ11102231) at 1:1000 dilution. Secondary antibody: HRP Goat Anti-Rabbit IgG (H+L) (STJS000856) at 1:10000 dilution. Lysates/proteins: 25 µg per lane. Blocking buffer: 3% nonfat dry milk in TBST. Detection: ECL Basic Kit. Exposure time: 90s.