

Anti-EGFR antibody (800-900) [S9MR] (STJ11102229)

GENERAL INFORMATION

Product Type	Primary antibodies
Applications	WB/IHC-P/ELISA
Host / Source	Rabbit
Reactivity	Human/Mouse

PRODUCT PROPERTIES

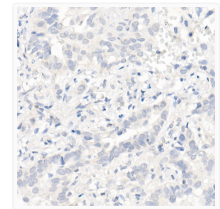
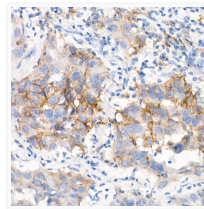
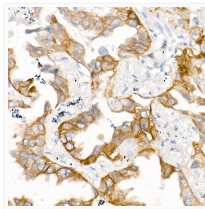
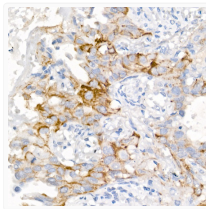
Clonality	Monoclonal
Concentration	Lot specific
Conjugation	Unconjugated
Purification	Affinity purification
Dilution Range	WB:1:500-1:2000 IHC-P:1:50-1:200 ELISA:Recommended starting concentration is 1 Mu g/mL. Please optimize the concentration based on your specific assay requirements.
Formulation	PBS with 0.02% Sodium Azide, 0.05% BSA, 50% Glycerol, pH 7.3.
Isotype	IgG
Molecular Weight	Protein Mw: 134kDa Observed Mw: 175kDa
Storage Instruction	Store at -20°C for up to 1 year from the date of receipt, and avoid repeat freeze-thaw cycles.

TARGET INFORMATION

Gene ID	1956
Gene Symbol	EGFR
UniProt ID	EGFR_HUMAN
Immunogen Region	800-900
Immunogen Sequence	DYVREHKDNIGSQYLLNWCV QIAKGMNYLEDRLVHRDLA ARNVLVKTPQHVKITDFGLA KLLGAEKEYHAEGGKVIPIK WMALESILHRIYTHQSDVWS Y
Specificity	A synthetic peptide corresponding to a sequence within amino acids 800-900 of human EGFR (L858R) (P00533).

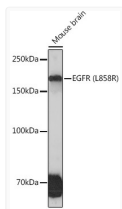
ADDITIONAL INFORMATION

Note STRICTLY FOR FURTHER SCIENTIFIC RESEARCH USE ONLY (RUO). MUST NOT TO BE USED IN DIAGNOSTIC OR THERAPEUTIC APPLICATIONS.



Immunohistochemistry analysis of paraffin-embedded Human lung adenocarcinoma (egfr-l858r positive sample) using EGFR (L858R) Rabbit monoclonal antibody (STJ11102229) at dilution of 1:100 (40x lens). Perform high pressure antigen retrieval with 10 mM citrate buffer pH 6. 0 before commencing with immunohistochemistry staining protocol.

Immunohistochemistry analysis of paraffin-embedded Human lung adenocarcinoma (egfr-e745-a750del positive sample) using EGFR (L858R) Rabbit monoclonal antibody (STJ11102229) at dilution of 1:100 (40x lens). Perform high pressure antigen retrieval with 10 mM citrate buffer pH 6. 0 before commencing with immunohistochemistry staining protocol.



Western blot analysis of extracts of Mouse brain cells, using EGFR (L858R) Rabbit monoclonal antibody (STJ11102229) at 1:500 dilution. Secondary antibody: HRP Goat Anti-Rabbit IgG (H+L) (STJS000856) at 1:10000 dilution. Lysates/proteins: 25 Mu g per lane. Blocking buffer: 3% nonfat dry milk in TBST. Detection: ECL Enhanced Kit. Exposure time: 3min.