

Anti-HSP90AA1 antibody (1-100) [S9MR] (STJ11102219)

GENERAL INFORMATION

Product Type	Primary antibodies
Applications	WB/IF/ICC/IP/ELISA
Host / Source	Rabbit
Reactivity	Human/Mouse/Rat

PRODUCT PROPERTIES

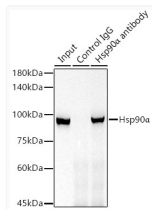
Clonality	Monoclonal
Concentration	Lot specific
Conjugation	Unconjugated
Purification	Affinity purification
Dilution Range	WB:1:500-1:2000 IF/CC:1:50-1:200 IP:0.5 Mu g-4 Mu g antibody for 200 Mu g-400 Mu g extracts of whole cells ELISA:Recommended starting concentration is 1 Mu g/mL. Please optimize the concentration based on your specific assay requirements
Formulation	PBS with 0.02% Sodium Azide, 0.05% BSA, 50% Glycerol, pH 7.3.
Isotype	IgG
Molecular Weight	Protein Mw: 85kDa Observed Mw: 90kDa
Storage Instruction	Store at -20°C for up to 1 year from the date of receipt, and avoid repeat freeze-thaw cycles.

TARGET INFORMATION

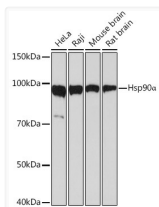
Gene ID	3320
Gene Symbol	HSP90AA1
UniProt ID	HS90A_HUMAN
Immunogen Region	1-100
Immunogen Sequence	MPEETQTQDQPMEEVEVTF AFQAEIAQLMSLIINTFYNS KEIFLRELISNSSDALDKIR YESLTDPSKLDGSKELHINL IPNKQDRRTLIVDTGIGMTK
Specificity	A synthetic peptide corresponding to a sequence within amino acids 1-100 of human Hsp90 Alpha (NP_005339.3).

ADDITIONAL INFORMATION

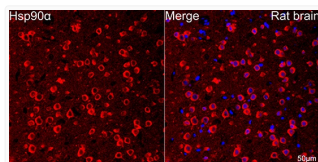
Note **STRICTLY FOR FURTHER SCIENTIFIC RESEARCH USE ONLY (RUO). MUST NOT TO BE USED IN DIAGNOSTIC OR THERAPEUTIC APPLICATIONS.**



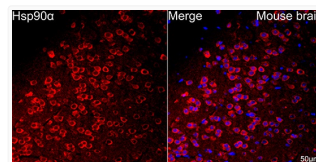
Immunoprecipitation analysis of 300 Mu g extracts of 293T cells using 3 Mu g Hsp90 Alpha antibody (STJ11102219). Western blot was performed from the immunoprecipitate using Hsp90 Alpha antibody (STJ11102219) at a dilution of 1:1000.



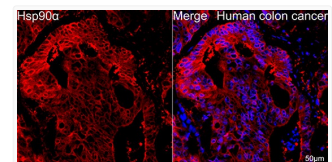
Western blot analysis of various lysates using Hsp90 Alpha Rabbit monoclonal antibody (STJ11102219) at 1:1000 dilution. Secondary antibody: HRP Goat Anti-Rabbit IgG (H+L) (STJS000856) at 1:10000 dilution. Lysates/proteins: 25 Mu g per lane. Blocking buffer: 3% nonfat dry milk in TBST. Detection: ECL Basic Kit. Exposure time: 3s.



Confocal imaging of paraffin-embedded Rat brain tissue using Hsp90 Alpha Rabbit monoclonal antibody (STJ11102219, dilution 1:100) followed by a further incubation with Cy3 Goat Anti-Rabbit IgG (H+L) (dilution 1:500) (Red). DAPI was used for nuclear staining (Blue). Microwave antigen retrieval performed with 0. 01M Citrate Buffer (pH 6. 0) prior to IF staining. Objective: 40x.



Confocal imaging of paraffin-embedded Mouse brain tissue using Hsp90 Alpha Rabbit monoclonal antibody (STJ11102219, dilution 1:100) followed by a further incubation with Cy3 Goat Anti-Rabbit IgG (H+L) (dilution 1:500) (Red). DAPI was used for nuclear staining (Blue). Microwave antigen retrieval performed with 0. 01M Citrate Buffer (pH 6. 0) prior to IF staining. Objective: 40x.



Confocal imaging of paraffin-embedded Human colon cancer tissue using Hsp90 Alpha Rabbit monoclonal antibody (STJ11102219, dilution 1:100) followed by a further incubation with Cy3 Goat Anti-Rabbit IgG (H+L) (dilution 1:500) (Red). DAPI was used for nuclear staining (Blue). High pressure antigen retrieval performed with 0. 01M Citrate Buffer (pH 6. 0) prior to IF staining. Objective: 40x.