

Anti-LMNB2 antibody (521-620) [S8MR] (STJ11102218)
GENERAL INFORMATION

Product Type	Primary antibodies
Applications	WB/IHC-P/IF/ICC/ELISA
Host / Source	Rabbit
Reactivity	Human/Mouse/Rat

PRODUCT PROPERTIES

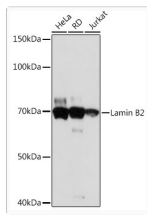
Clonality	Monoclonal
Concentration	Lot specific
Conjugation	Unconjugated
Purification	Affinity purification
Dilution Range	WB:1:500-1:1000 IHC-P:1:50-1:200 IF/CC:1:50-1:200 ELISA:Recommended starting concentration is 1 µg/mL. Please optimize the concentration based on your specific assay requirements.
Formulation	PBS with 0.02% Sodium Azide, 0.05% BSA, 50% Glycerol, pH 7.3.
Isotype	IgG
Molecular Weight	Protein Mw: 70kDa Observed Mw: 68kDa
Storage Instruction	Store at -20°C for up to 1 year from the date of receipt, and avoid repeat freeze-thaw cycles.

TARGET INFORMATION

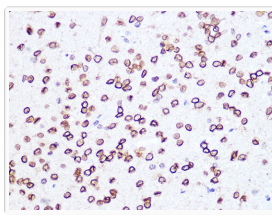
Gene ID	84823
Gene Symbol	LMNB2
UniProt ID	LMNB2_HUMAN
Immunogen Region	521-620
Immunogen Sequence	YILRAGQMVTVWAAGAGVAH SPPSTLVWKGQSSWGTGESF RTVLVNADGEEVAMRTVKKS SVMRENENGEAAAAAAAAEFGE EDLFHQGGDPRTTSRGCYVM
Specificity	A synthetic peptide corresponding to a sequence within amino acids 521-620 of human Lamin B2 (Q03252).

ADDITIONAL INFORMATION

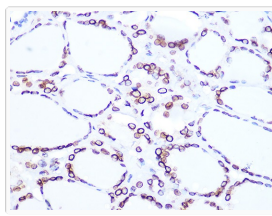
Note	STRICTLY FOR FURTHER SCIENTIFIC RESEARCH USE ONLY (RUO). MUST NOT TO BE USED IN DIAGNOSTIC OR THERAPEUTIC APPLICATIONS.
------	---



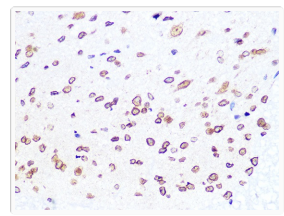
Western blot analysis of extracts of various cell lines, using Lamin B2 rabbit monoclonal antibody (STJ11102218) at 1:1000 dilution. Secondary antibody: HRP Goat Anti-rabbit IgG (H+L) (STJS000856) at 1:10000 dilution. Lysates/proteins: 25 μ g per lane. Blocking buffer: 3% non-fat dry milk in TBST. Detection: ECL Basic Kit. Exposure time: 30s.



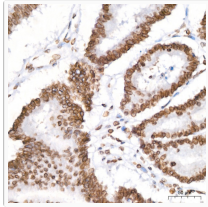
Immunohistochemistry analysis of paraffin-embedded rat brain using Lamin B2 rabbit monoclonal antibody (STJ11102218) at dilution of 1:100 (40x lens). Perform microwave antigen retrieval with 10 mM PBS buffer pH 7.2 before commencing with immunohistochemistry staining protocol.



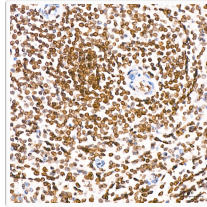
Immunohistochemistry analysis of paraffin-embedded human thyroid cancer using Lamin B2 rabbit monoclonal antibody (STJ11102218) at dilution of 1:100 (40x lens). Perform microwave antigen retrieval with 10 mM PBS buffer pH 7.2 before commencing with immunohistochemistry staining protocol.



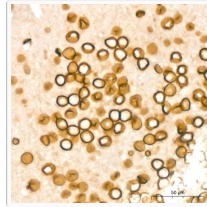
Immunohistochemistry analysis of paraffin-embedded mouse spinal cord using Lamin B2 rabbit monoclonal antibody (STJ11102218) at dilution of 1:100 (40x lens). Perform microwave antigen retrieval with 10 mM PBS buffer pH 7.2 before commencing with immunohistochemistry staining protocol.



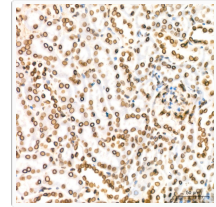
Immunohistochemistry analysis of Lamin B2 in paraffin-embedded human colon carcinoma tissue using Lamin B2 rabbit monoclonal antibody (A22347) at a dilution of 1:200 (40x lens). High pressure antigen retrieval was performed with 0.01 M citrate buffer (pH 6.0) prior to immunohistochemistry staining.



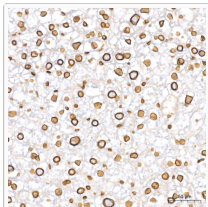
Immunohistochemistry analysis of Lamin B2 in paraffin-embedded human spleen tissue using Lamin B2 rabbit monoclonal antibody (A22347) at a dilution of 1:200 (40x lens). High pressure antigen retrieval was performed with 0.01 M citrate buffer (pH 6.0) prior to immunohistochemistry staining.



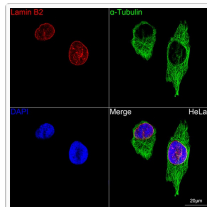
Immunohistochemistry analysis of Lamin B2 in paraffin-embedded mouse brain tissue using Lamin B2 rabbit monoclonal antibody (A22347) at a dilution of 1:200 (40x lens). High pressure antigen retrieval was performed with 0.01 M citrate buffer (pH 6.0) prior to immunohistochemistry staining.



Immunohistochemistry analysis of Lamin B2 in paraffin-embedded mouse kidney tissue using Lamin B2 rabbit monoclonal antibody (A22347) at a dilution of 1:200 (40x lens). High pressure antigen retrieval was performed with 0.01 M citrate buffer (pH 6.0) prior to immunohistochemistry staining.



Immunohistochemistry analysis of Lamin B2 in paraffin-embedded mouse liver tissue using Lamin B2 rabbit monoclonal antibody (A22347) at a dilution of 1:200 (40x lens). High pressure antigen retrieval was performed with 0.01 M citrate buffer (pH 6.0) prior to immunohistochemistry staining.



Confocal imaging of HeLa cells using Lamin B2 rabbit monoclonal antibody (STJ11102218, dilution 1:100) (Red). The cells were counterstained with Alpha-Tubulin rabbit monoclonal antibody (dilution 1:100) (Green). DAPI was used for nuclear staining (blue). Objective: 60x.