

## Anti-PIK3R1 antibody (1-100) [S5MR] (STJ11102215)

### GENERAL INFORMATION

Product Type	Primary antibodies
Applications	WB/IHC-P/ELISA
Host / Source	Rabbit
Reactivity	Human/Mouse/Rat

### PRODUCT PROPERTIES

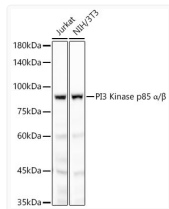
Clonality	Monoclonal
Concentration	Lot specific
Conjugation	Unconjugated
Purification	Affinity purification
Dilution Range	WB:1:1000-1:2000 IHC-P:1:200-1:800 ELISA:Recommended starting concentration is 1 µg/mL. Please optimize the concentration based on your specific assay requirements.
Formulation	PBS with 0.02% Sodium Azide, 0.05% BSA, 50% Glycerol, pH 7.3.
Isotype	IgG
Molecular Weight	Protein Mw: 84kDa Observed Mw: 85kDa
Storage Instruction	Store at -20°C for up to 1 year from the date of receipt, and avoid repeat freeze-thaw cycles.

### TARGET INFORMATION

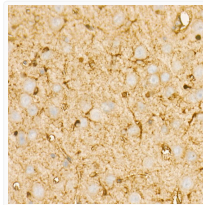
Gene ID	<a href="#">5295</a>
Gene Symbol	<a href="#">PIK3R1</a>
UniProt ID	<a href="#">P85A_HUMAN</a>
Immunogen Region	1-100
Immunogen Sequence	MSAEGYQYRALYDYKKEREE DIDLHLGDILTVNKGSLVAL GFSDGQEARPEEIGWLNQYN ETTGERGDFPGTYVEYIGRK KISPPTPKRPPRPLPVAPG
Specificity	A synthetic peptide corresponding to a sequence within amino acids 1-100 of human PI3 Kinase p85 alpha (P27986).

### ADDITIONAL INFORMATION

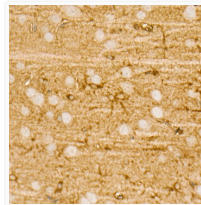
Note STRICTLY FOR FURTHER SCIENTIFIC RESEARCH USE ONLY (RUO). MUST NOT TO BE USED IN DIAGNOSTIC OR THERAPEUTIC APPLICATIONS.



Western blot analysis of various lysates, using PI3 Kinase p85 alpha rabbit monoclonal antibody (STJ11102215) at 1:2000 dilution. Secondary antibody: HRP Goat Anti-rabbit IgG (H+L) (STJS000856) at 1:10000 dilution. Lysates/proteins: 25µg per lane. Blocking buffer: 3% non-fat dry milk in TBST. Detection: ECL Basic Kit. Exposure time: 180s.



Immunohistochemistry analysis of paraffin-embedded mouse brain using PI3 Kinase p85 alpha rabbit monoclonal antibody (STJ11102215) at dilution of 1:60 (40x lens). Perform high pressure antigen retrieval with 10 mM citrate buffer pH 6.0 before commencing with immunohistochemistry staining protocol.



Immunohistochemistry analysis of paraffin-embedded rat brain using PI3 Kinase p85 alpha rabbit monoclonal antibody (STJ11102215) at dilution of 1:60 (40x lens). Perform high pressure antigen retrieval with 10 mM citrate buffer pH 6.0 before commencing with immunohistochemistry staining protocol.