

Anti-SERPINA1 antibody (1-418) [S8MR] (STJ11102208)

GENERAL INFORMATION

Product Type	Primary antibodies
Applications	WB/ELISA
Host / Source	Rabbit
Reactivity	Mouse/Rat

PRODUCT PROPERTIES

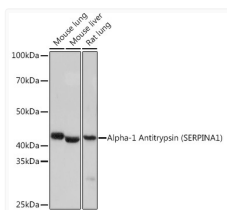
Clonality	Monoclonal
Concentration	Lot specific
Conjugation	Unconjugated
Purification	Affinity purification
Dilution Range	WB:1:1000-1:5000 ELISA:Recommended starting concentration is 1 Mu g/mL. Please optimize the concentration based on your specific assay requirements.
Formulation	PBS with 0.02% Sodium Azide, 0.05% BSA, 50% Glycerol, pH 7.3.
Isotype	IgG
Molecular Weight	Protein Mw: 47kDa Observed Mw: 45kDa
Storage Instruction	Store at -20°C for up to 1 year from the date of receipt, and avoid repeat freeze-thaw cycles.

TARGET INFORMATION

Gene ID	5265
Gene Symbol	SERPINA1
UniProt ID	A1AT_HUMAN
Immunogen Region	1-418
Immunogen Sequence	MPSSVSWGILLLAGLCLVPSLSLAEDPQGGDAAQKTDTSHH DQDHPTFNKITPNLAEFAFS LYRQLAHQSNSTNIFFSPVS IATAFAMLSLGTKADTHDEI LEGLNFNLTEIPEAQIHEGF QELLRTLNQPDSQLQLTTGN GLFLSEGLKLVDFLEDVKK LYHSEAFVNFVFGDTEEAKKK INDYVEKGTQGGKIVDLVKEL DRDVFALVNYIFFKGGKWER PFEVKDTEEDFHVDQVTT
Specificity	Recombinant fusion protein containing a sequence corresponding to amino acids 1-418 of human Alpha-1 Antitrypsin (SERPINA1) (NP_000286.3).

ADDITIONAL INFORMATION

Note **STRICTLY FOR FURTHER SCIENTIFIC RESEARCH USE ONLY (RUO). MUST NOT TO BE USED IN DIAGNOSTIC OR THERAPEUTIC APPLICATIONS.**



Western blot analysis of extracts of various cell lines, using Alpha-1 Antitrypsin (Alpha-1 Antitrypsin (SERPINA1)) Rabbit monoclonal antibody (STJ11102208) at 1:1000 dilution. Secondary antibody: HRP Goat Anti-Rabbit IgG (H+L) (STJS000856) at 1:10000 dilution. Lysates/proteins: 25 Mu g per lane. Blocking buffer: 3% nonfat dry milk in TBST. Detection: ECL Basic Kit. Exposure time: 1s.