

## Anti-MYH7 antibody (1200-1400) [S7MR] (STJ11102207)

### GENERAL INFORMATION

Product Type	Primary antibodies
Applications	WB/IHC-P/IF/ICC/ELISA
Host / Source	Rabbit
Reactivity	Mouse/Rat

### PRODUCT PROPERTIES

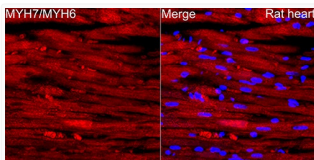
Clonality	Monoclonal
Concentration	Lot specific
Conjugation	Unconjugated
Purification	Affinity purification
Dilution Range	WB:1:1000-1:6000 IHC-P:1:100-1:500 IF/ICC:1:100-1:400 ELISA:Recommended starting concentration is 1 $\mu$ g/mL. Please optimize the concentration based on your specific assay requirements.
Formulation	PBS with 0.02% Sodium Azide, 0.05% BSA, 50% Glycerol, pH 7.3.
Isotype	IgG
Molecular Weight	Protein Mw: 224kDa Observed Mw: 250kDa
Storage Instruction	Store at -20°C for up to 1 year from the date of receipt, and avoid repeat freeze-thaw cycles.

### TARGET INFORMATION

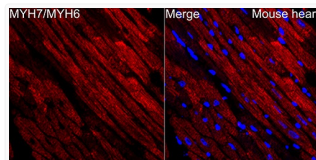
Gene ID	<a href="#">4624</a> <a href="#">4625</a>
Gene Symbol	<a href="#">MYH6</a> <a href="#">MYH7</a>
UniProt ID	<a href="#">MYH6_HUMAN</a> <a href="#">MYH7_HUMAN</a>
Immunogen Region	1200-1400
Immunogen Sequence	VAELGEQIDNLRVKQKLEK EKSEFKLELDDVTSNMEQII KAKANLEKMCRTLEDQMNEH RSKAEETQRSVNDLTSQRAK LQTENGELSRQLDEKEALIS QLTRGKLTYSQQLEDLKRQL EEEVKAKNALAHALQSARHD CDLLREQYEEETEAKAELQR VLSKANSEVAQWRKYETDA IQRTTELEEAKKKLAQRLQE A
Specificity	Recombinant fusion protein containing a sequence corresponding to amino acids 1200-1400 of human Myosin heavy chain (P12883).

### ADDITIONAL INFORMATION

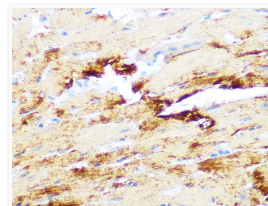
Note STRICTLY FOR FURTHER SCIENTIFIC RESEARCH USE ONLY (RUO). MUST NOT TO BE USED IN DIAGNOSTIC OR THERAPEUTIC APPLICATIONS.



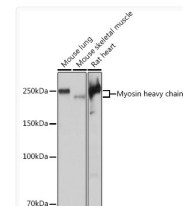
Immunofluorescence analysis of paraffin-embedded rat heart using Myosin heavy chain Rabbit monoclonal antibody (STJ11102207) at dilution of 1:100 (40x lens). Secondary antibody: Cy3 Goat Anti-Rabbit IgG (H+L) at 1:500 dilution. Blue: DAPI for nuclear staining.



Immunofluorescence analysis of paraffin-embedded mouse heart using Myosin heavy chain Rabbit monoclonal antibody (STJ11102207) at dilution of 1:100 (40x lens). Secondary antibody: Cy3 Goat Anti-Rabbit IgG (H+L) at 1:500 dilution. Blue: DAPI for nuclear staining.



Immunohistochemistry analysis of Myosin heavy chain in paraffin-embedded mouse heart using Myosin heavy chain Rabbit monoclonal antibody (STJ11102207) at dilution of 1:100 (40x lens). Perform microwave antigen retrieval with 10 mM PBS buffer pH 7.2 before commencing with immunohistochemistry staining protocol.



Western blot analysis of various lysates using Myosin heavy chain Rabbit monoclonal antibody (STJ11102207) at 1:1000 dilution. Secondary antibody: HRP Goat Anti-Rabbit IgG (H+L) (STJS000856) at 1:10000 dilution. Lysates/proteins: 25  $\mu$ g per lane. Blocking buffer: 3% nonfat dry milk in TBST. Detection: ECL Basic Kit. Exposure time: 1s.