

Anti-CDH1/CDH2/CDH3/CDH4 antibody (806-906) [S1MR] (STJ11102191)

GENERAL INFORMATION

Product Type	Primary antibodies
Applications	WB/IHC-P/ELISA
Host / Source	Rabbit
Reactivity	Human/Mouse

PRODUCT PROPERTIES

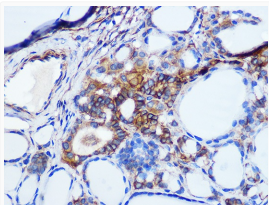
Clonality	Monoclonal
Concentration	Lot specific
Conjugation	Unconjugated
Purification	Affinity purification
Dilution Range	WB:1:500-1:2000 IHC-P:1:50-1:200 ELISA:Recommended starting concentration is 1 µg/mL. Please optimize the concentration based on your specific assay requirements.
Formulation	PBS with 0.02% Sodium Azide, 0.05% BSA, 50% Glycerol, pH 7.3.
Isotype	IgG
Molecular Weight	Protein Mw: 140kDa Observed Mw: 140kDa
Storage Instruction	Store at -20°C for up to 1 year from the date of receipt, and avoid repeat freeze-thaw cycles.

TARGET INFORMATION

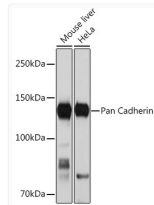
Gene ID	999 1003 1001 CDH1 CDH5 CADH1_HUMAN CADH5_HUMAN CADH3_HUMAN
Immunogen Region	806-906
Immunogen Sequence	IRRMDERPIHAEPQYPVRSAPHPGDIIGDFINEGLKAADNDPTAPPYDSSLVFDYEGSGS TAGLSSLLNSSSSGGEQDYDYLNDWGPFRFKKLADMYGGGD
Specificity	A synthetic peptide corresponding to a sequence within amino acids 806-906 of human Cadherin-2 (CDH2) (P19022).

ADDITIONAL INFORMATION

Note **STRICTLY FOR FURTHER SCIENTIFIC RESEARCH USE ONLY (RUO). MUST NOT TO BE USED IN DIAGNOSTIC OR THERAPEUTIC APPLICATIONS.**



Immunohistochemistry analysis of paraffin-embedded human thyroid cancer using Pan Cadherin Rabbit monoclonal antibody (STJ11102191) at dilution of 1:100 (40x lens). Perform microwave antigen retrieval with 10 mM PBS buffer pH 7.2 before commencing with immunohistochemistry staining protocol.



Western blot analysis of extracts of various cell lines, using Pan Cadherin Rabbit monoclonal antibody (STJ11102191) at 1:1000 dilution. Secondary antibody: HRP Goat Anti-Rabbit IgG (H+L) (STJS000856) at 1:10000 dilution. Lysates/proteins: 25 µg per lane. Blocking buffer: 3% nonfat dry milk in TBST. Detection: ECL Basic Kit. Exposure time: 30s.