

## Anti-RAB9A antibody (1-100) [S6MR] (STJ11102186)

### GENERAL INFORMATION

Product Type	Primary antibodies
Applications	WB/IHC-P/IF/ICC/ELISA
Host / Source	Rabbit
Reactivity	Human/Mouse/Rat

### PRODUCT PROPERTIES

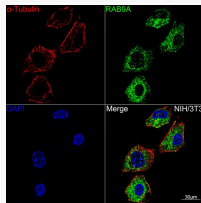
Clonality	Monoclonal
Concentration	Lot specific
Conjugation	Unconjugated
Purification	Affinity purification
Dilution Range	WB:1:500-1:2000 IHC-P:1:50-1:200 IF/CC:1:50-1:200 ELISA:Recommended starting concentration is 1 Mu g/mL. Please optimize the concentration based on your specific assay requirements.
Formulation	PBS with 0.02% Sodium Azide, 0.05% BSA, 50% Glycerol, pH 7.3.
Isotype	IgG
Molecular Weight	Protein Mw: 23kDa Observed Mw: 23kDa
Storage Instruction	Store at -20°C for up to 1 year from the date of receipt, and avoid repeat freeze-thaw cycles.

### TARGET INFORMATION

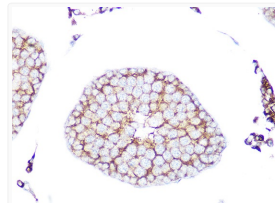
Gene ID	<a href="#">9367</a>
Gene Symbol	<a href="#">RAB9A</a>
UniProt ID	<a href="#">RAB9A_HUMAN</a>
Immunogen Region	1-100
Immunogen Sequence	MAGKSSLFKVILLGDGGVGK SSLMNRVYTNKFDTQLFHTI GVEFLNKDLEVDGHFVTMQI WDTAGQERFRSLRTPFYRGS DCCLLTFVDDSQSFQNLNS
Specificity	A synthetic peptide corresponding to a sequence within amino acids 1-100 of human RAB9A (NP_004242.1).

### ADDITIONAL INFORMATION

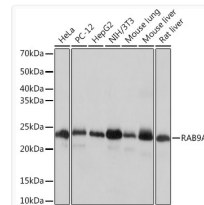
Note STRICTLY FOR FURTHER SCIENTIFIC RESEARCH USE ONLY (RUO). MUST NOT TO BE USED IN DIAGNOSTIC OR THERAPEUTIC APPLICATIONS.



Confocal imaging of NIH/3T3 cells using RAB9A Rabbit monoclonal antibody (STJ11102186, dilution 1:100) (Green). The cells were counterstained with Alpha-tubulin (ubiquitous) chain Rabbit monoclonal antibody (dilution 1:100) (Red). DAPI was used for nuclear staining (blue). Objective: 60x.



Immunohistochemistry analysis of paraffin-embedded rat testis using RAB9A Rabbit monoclonal antibody (STJ11102186) at dilution of 1:100 (40x lens). Perform microwave antigen retrieval with 10 mM Tris/EDTA buffer pH 9.0 before commencing with immunohistochemistry staining protocol.



Western blot analysis of extracts of various cell lines, using RAB9A Rabbit monoclonal antibody (STJ11102186) at 1:1000 dilution. Secondary antibody: HRP Goat Anti-Rabbit IgG (H+L) (STJS000856) at 1:10000 dilution. Lysates/proteins: 25 Mu g per lane. Blocking buffer: 3% nonfat dry milk in TBST. Detection: ECL Basic Kit. Exposure time: 1s.