

## Anti-MS4A1 antibody (100-200) [S5MR] (STJ11102185)

### GENERAL INFORMATION

Product Type	Primary antibodies
Applications	WB/IHC-P/IF/ICC/FC/ELISA
Host / Source	Rabbit
Reactivity	Human

### PRODUCT PROPERTIES

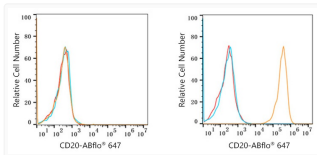
Clonality	Monoclonal
Concentration	Lot specific
Conjugation	Unconjugated
Purification	Affinity purification
Dilution Range	WB:1:500-1:1000 IHC-P:1:2000-1:10000 IF/CC:1:800-1:3200 FC:1:50-1:200 ELISA:Recommended starting concentration is 1 $\mu$ g/mL. Please optimize the concentration based on your specific assay requirements.
Formulation	PBS with 0.09% Sodium Azide, 0.05% BSA, 50% Glycerol, pH7.3.
Isotype	IgG
Molecular Weight	Protein Mw: 33kDa Observed Mw: 30-50kDa
Storage Instruction	Store at -20°C for up to 1 year from the date of receipt, and avoid repeat freeze-thaw cycles.

### TARGET INFORMATION

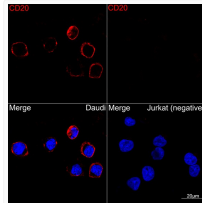
Gene ID	<a href="#">931</a>
Gene Symbol	<a href="#">MS4A1</a>
UniProt ID	<a href="#">CD20_HUMAN</a>
Immunogen Region	100-200
Immunogen Sequence	LLAATEKNSRKLKVGKMM NSLSLFAAISGMILSIMDIL NIKISHFLKMESLNFI RAHT PYINIYNCEPANPSEKNSPS TQYCYSIQSLFLGILSVMLI F
Specificity	A synthetic peptide corresponding to a sequence within amino acids 100-200 of human CD20 (NP_068769.2).

### ADDITIONAL INFORMATION

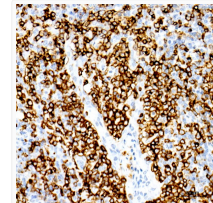
Note **STRICTLY FOR FURTHER SCIENTIFIC RESEARCH USE ONLY (RUO). MUST NOT TO BE USED IN DIAGNOSTIC OR THERAPEUTIC APPLICATIONS.**



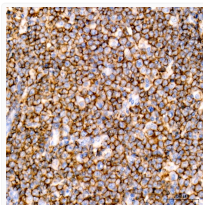
Flow cytometry:  $1 \times 10^6$  Jurkat cells (negative control, left) and Daudi cells (right) were surface-stained with CD20 Rabbit monoclonal antibody (STJ11102185, 10  $\mu$ g/mL orange line) or ABR647 Rabbit IgG isotype control (10  $\mu$ g/mL, blue line). Non-fluorescently stained cells were used as blank control (red line).



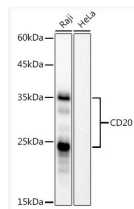
Confocal imaging of Daudi and Jurkat (Negative control) cells using CD20 Rabbit monoclonal antibody (STJ11102185, dilution 1:1000) (Red), DAPI was used for nuclear staining (blue). Objective: 100x.



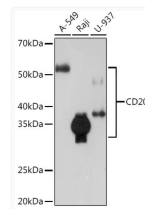
Immunohistochemistry analysis of paraffin-embedded human tonsil using CD20 Rabbit monoclonal antibody (STJ11102185) at dilution of 1:8000 (40x lens). Perform high pressure antigen retrieval with 10 mM citrate buffer pH 6.0 before commencing with immunohistochemistry staining protocol.



Immunohistochemistry analysis of paraffin-embedded Human anaplastic large cell lymphoma using CD20 Rabbit monoclonal antibody (STJ11102185) at dilution of 1:8000 (40x lens). Perform high pressure antigen retrieval with 10 mM citrate buffer pH 6.0 before commencing with immunohistochemistry staining protocol.



Western blot analysis of various lysates, using CD20 Rabbit monoclonal antibody (STJ11102185) at 1:1000 dilution. Secondary antibody: HRP Goat Anti-Rabbit IgG (H+L) (STJS000856) at 1:10000 dilution. Lysates/proteins: 25  $\mu$ g per lane. Blocking buffer: 3% nonfat dry milk in TBST. Detection: ECL Basic Kit. Negative control (NC): HeLa. Exposure time: 60s.



Western blot analysis of extracts of various cell lines, using CD20 Rabbit monoclonal antibody (STJ11102185) at 1:1000 dilution. Secondary antibody: HRP Goat Anti-Rabbit IgG (H+L) (STJS000856) at 1:10000 dilution. Lysates/proteins: 25  $\mu$ g per lane. Blocking buffer: 3% nonfat dry milk in TBST. Detection: ECL Enhanced Kit. Exposure time: 3min.