

Anti-ASH2L antibody (529-628) [S4MR] (STJ11102184)

GENERAL INFORMATION

Product Type	Primary antibodies
Applications	WB/IHC-P/IF/ICC/ELISA
Host / Source	Rabbit
Reactivity	Human/Mouse/Rat

PRODUCT PROPERTIES

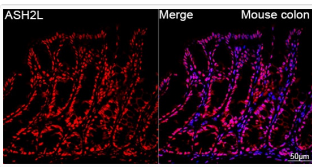
Clonality	Monoclonal
Concentration	Lot specific
Conjugation	Unconjugated
Purification	Affinity purification
Dilution Range	WB:1:500-1:1000 IHC-P:1:50-1:200 IF/CC:1:50-1:200 ELISA:Recommended starting concentration is 1 µg/mL. Please optimize the concentration based on your specific assay requirements.
Formulation	PBS with 0.02% Sodium Azide, 0.05% BSA, 50% Glycerol, pH 7.3.
Isotype	IgG
Molecular Weight	Protein Mw: 69kDa Observed Mw: 69kDa/85kDa
Storage Instruction	Store at -20°C for up to 1 year from the date of receipt, and avoid repeat freeze-thaw cycles.

TARGET INFORMATION

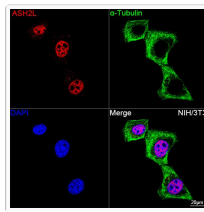
Gene ID	9070
Gene Symbol	ASH2L
UniProt ID	ASH2L_HUMAN
Immunogen Region	529-628
Immunogen Sequence	AEKSLKQTPHSEIIFYKNGV NQGVAYKDIFEGVYFPAISL YKSCTVSINFGPCFKYPPKD LTYRPMSDMGWGAVVEHTLA DVLYHVETEVDGRRSPPWEP
Specificity	A synthetic peptide corresponding to a sequence within amino acids 529-628 of human ASH2L (Q9UBL3).

ADDITIONAL INFORMATION

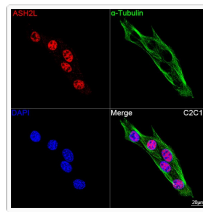
Note	STRICTLY FOR FURTHER SCIENTIFIC RESEARCH USE ONLY (RUO). MUST NOT TO BE USED IN DIAGNOSTIC OR THERAPEUTIC APPLICATIONS.
------	---



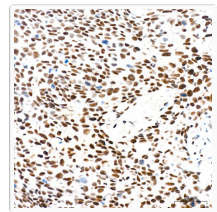
Confocal imaging of paraffin-embedded Mouse colon tissue using ASH2L Rabbit monoclonal antibody (STJ11102184, dilution 1:100) followed by a further incubation with Cy3 Goat Anti-Rabbit IgG (H+L) (dilution 1:500) (Red). DAPI was used for nuclear staining (Blue). Objective: 40x. Perform high pressure antigen retrieval with 0. 01 M citrate buffer (pH 6. 0) prior to IF staining.



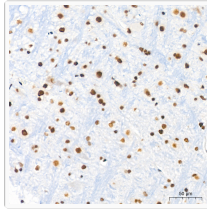
Confocal imaging of NIH/3T3 cells using ASH2L Rabbit monoclonal antibody (STJ11102184, dilution 1:100) followed by a further incubation with Cy3 Goat Anti-Rabbit IgG (H+L) (dilution 1:500) (Red). The cells were counterstained with Alpha-Tubulin Mouse monoclonal antibody (dilution 1:400) followed by incubation with ABflo® 488-conjugated Goat Anti-Mouse IgG (H+L) antibody (dilution 1:500) (Green). DAPI was used for nuclear staining (Blue). Objective: 100x.



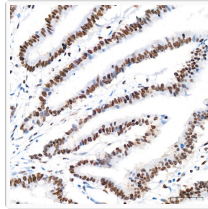
Confocal imaging of C2C12 cells using ASH2L Rabbit monoclonal antibody (STJ11102184, dilution 1:100) followed by a further incubation with Cy3 Goat Anti-Rabbit IgG (H+L) (dilution 1:500) (Red). The cells were counterstained with Alpha-Tubulin Mouse monoclonal antibody (dilution 1:400) followed by incubation with ABflo® 488-conjugated Goat Anti-Mouse IgG (H+L) antibody (dilution 1:500) (Green). DAPI was used for nuclear staining (Blue). Objective: 100x.



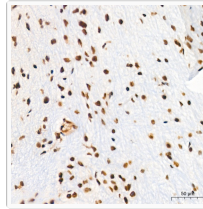
Immunohistochemistry analysis of ASH2L in paraffin-embedded human cervix cancer tissue using ASH2L Rabbit monoclonal antibody (STJ11102184) at a dilution of 1:200 (40x lens). High pressure antigen retrieval was performed with 0. 01 M citrate buffer (pH 6. 0) prior to immunohistochemistry staining.



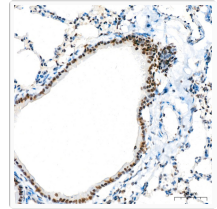
Immunohistochemistry analysis of ASH2L in paraffin-embedded mouse brain tissue using ASH2L Rabbit monoclonal antibody (STJ11102184) at a dilution of 1:200 (40x lens). High pressure antigen retrieval was performed with 0. 01 M citrate buffer (pH 6. 0) prior to immunohistochemistry staining.



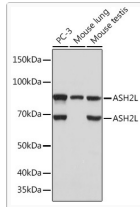
Immunohistochemistry analysis of ASH2L in paraffin-embedded human colon carcinoma tissue using ASH2L Rabbit monoclonal antibody (STJ11102184) at a dilution of 1:200 (40x lens). High pressure antigen retrieval was performed with 0. 01 M citrate buffer (pH 6. 0) prior to immunohistochemistry staining.



Immunohistochemistry analysis of ASH2L in paraffin-embedded rat brain tissue using ASH2L Rabbit monoclonal antibody (STJ11102184) at a dilution of 1:200 (40x lens). High pressure antigen retrieval was performed with 0. 01 M citrate buffer (pH 6. 0) prior to immunohistochemistry staining.



Immunohistochemistry analysis of ASH2L in paraffin-embedded mouse lung tissue using ASH2L Rabbit monoclonal antibody (STJ11102184) at a dilution of 1:200 (40x lens). High pressure antigen retrieval was performed with 0. 01 M citrate buffer (pH 6. 0) prior to immunohistochemistry staining.



Western blot analysis of various lysates using ASH2L Rabbit monoclonal antibody (STJ11102184) at 1:1000 dilution. Secondary antibody: HRP Goat Anti-Rabbit IgG (H+L) (STJS000856) at 1:10000 dilution. Lysates/proteins: 25 Mu g per lane. Blocking buffer: 3% nonfat dry milk in TBST. Detection: ECL Basic Kit. Exposure time: 5s.