

Anti-CAV2 antibody (1-100) [S2MR] (STJ11102182)

GENERAL INFORMATION

Product Type	Primary antibodies
Applications	WB/IHC-P/IP/ELISA
Host / Source	Rabbit
Reactivity	Human/Mouse

PRODUCT PROPERTIES

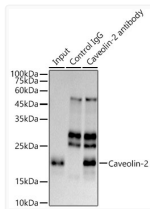
Clonality	Monoclonal
Concentration	Lot specific
Conjugation	Unconjugated
Purification	Affinity purification
Dilution Range	WB:1:500-1:2000 IHC-P:1:50-1:200 IP:0.5 Mu g-4 Mu g antibody for 200 Mu g-400 Mu g extracts of whole cells ELISA:Recommended starting concentration is 1 Mu g/mL. Please optimize the concentration based on your specific assay requirements.
Formulation	PBS with 0.02% Sodium Azide, 0.05% BSA, 50% Glycerol, pH 7.3.
Isotype	IgG
Molecular Weight	Protein Mw: 18kDa Observed Mw: 21kDa
Storage Instruction	Store at -20°C for up to 1 year from the date of receipt, and avoid repeat freeze-thaw cycles.

TARGET INFORMATION

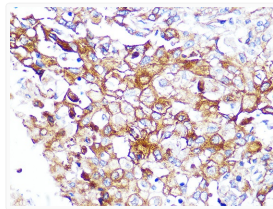
Gene ID	858
Gene Symbol	CAV2
UniProt ID	CAV2_HUMAN
Immunogen Region	1-100
Immunogen Sequence	MGLETEKADVQLFMDDSYS HHSGLLEYADPEKFADSDQDR DPHRLNSHLKLGFDVIAEPTVTHSFDKVVWICSHALFEIS KYVMYKFLTVFLAIPAFIA
Specificity	A synthetic peptide corresponding to a sequence within amino acids 1-100 of human Caveolin-2 (P51636).

ADDITIONAL INFORMATION

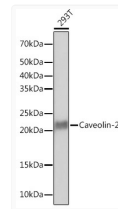
Note STRICTLY FOR FURTHER SCIENTIFIC RESEARCH USE ONLY (RUO). MUST NOT TO BE USED IN DIAGNOSTIC OR THERAPEUTIC APPLICATIONS.



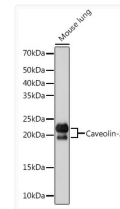
Immunoprecipitation analysis of 300 Mu g extracts of HeLa cells using 3 Mu g Caveolin-2 antibody (STJ11102182). Western blot was performed from the immunoprecipitate using Caveolin-2 antibody (STJ11102182) at a dilution of 1:1000.



Immunohistochemistry analysis of Caveolin-2 in paraffin-embedded human esophageal cancer using Caveolin-2 Rabbit monoclonal antibody (STJ11102182) at dilution of 1:100 (40x lens). Perform microwave antigen retrieval with 10 mM PBS buffer pH 7.2 before commencing with immunohistochemistry staining protocol.



Western blot analysis of lysates from 293T cells, using Caveolin-2 Rabbit monoclonal antibody (STJ11102182) at 1:1000 dilution. Secondary antibody: HRP Goat Anti-Rabbit IgG (H+L) (STJS000856) at 1:10000 dilution. Lysates/proteins: 25 Mu g per lane. Blocking buffer: 3% nonfat dry milk in TBST. Detection: ECL Basic Kit. Exposure time: 90s.



Western blot analysis of lysates from Mouse lung, using Caveolin-2 Rabbit monoclonal antibody (STJ11102182) at 1:1000 dilution. Secondary antibody: HRP Goat Anti-Rabbit IgG (H+L) (STJS000856) at 1:10000 dilution. Lysates/proteins: 25 Mu g per lane. Blocking buffer: 3% nonfat dry milk in TBST. Detection: ECL Basic Kit. Exposure time: 1s.