

Anti-BDNF antibody (100-200) [S7MR] (STJ11102177)

GENERAL INFORMATION

Product Type	Primary antibodies
Applications	IF/ICC/ELISA
Host / Source	Rabbit
Reactivity	Human/Mouse/Rat

PRODUCT PROPERTIES

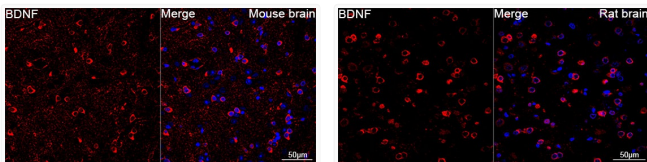
Clonality	Monoclonal
Concentration	Lot specific
Conjugation	Unconjugated
Purification	Affinity purification
Dilution Range	IF/ICC:1:50-1:200 ELISA:Recommended starting concentration is 1 µg/mL. Please optimize the concentration based on your specific assay requirements.
Formulation	PBS with 0.02% Sodium Azide, 0.05% BSA, 50% Glycerol, pH 7.3.
Isotype	IgG
Molecular Weight	Protein Mw: 28kDa Observed Mw: 15kDa/28kDa
Storage Instruction	Store at -20°C for up to 1 year from the date of receipt, and avoid repeat freeze-thaw cycles.

TARGET INFORMATION

Gene ID	627
Gene Symbol	BDNF
UniProt ID	BDNF_HUMAN
Immunogen Region	100-200
Immunogen Sequence	VPLEPPLLFLLEEYKNYLDA ANMSMRVRRHSDPARRGELS VCDISEWVTAADKKTAVDM SGGTVTIVLEKVPVSKGQLKQ YFYETKCNPMGYTKEGCRGI D
Specificity	A synthetic peptide corresponding to a sequence within amino acids 100-200 of human BDNF (P23560).

ADDITIONAL INFORMATION

Note STRICTLY FOR FURTHER SCIENTIFIC RESEARCH USE ONLY (RUO). MUST NOT TO BE USED IN DIAGNOSTIC OR THERAPEUTIC APPLICATIONS.



Confocal imaging of paraffin-embedded Mouse brain using BDNF Rabbit monoclonal antibody (STJ11102177, dilution 1:200) followed by a further incubation with Cy3 Goat Anti-Rabbit IgG (H+L) (dilution 1:500) (Red). DAPI was used for nuclear staining (Blue). Objective: 40x. Perform microwave antigen retrieval with 0.01 M citRate buffer (pH 6.0) prior to IF staining.

Confocal imaging of paraffin-embedded Rat brain using BDNF Rabbit monoclonal antibody (STJ11102177, dilution 1:200) followed by a further incubation with Cy3 Goat Anti-Rabbit IgG (H+L) (dilution 1:500) (Red). DAPI was used for nuclear staining (Blue). Objective: 40x. Perform microwave antigen retrieval with 0.01 M citRate buffer (pH 6.0) prior to IF staining.