

Anti-MAP2K1/MAP2K2 antibody (1-360) [S5MR] (STJ11102175)

GENERAL INFORMATION

Product Type	Primary antibodies
Applications	WB/ELISA
Host / Source	Rabbit
Reactivity	Human/Mouse/Rat

PRODUCT PROPERTIES

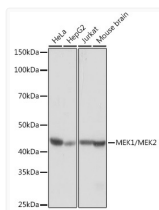
Clonality	Monoclonal
Concentration	Lot specific
Conjugation	Unconjugated
Purification	Affinity purification
Dilution Range	WB:1:5000-1:30000 ELISA:Recommended starting concentration is 1 µg/mL. Please optimize the concentration based on your specific assay requirements.
Formulation	PBS with 0.02% Sodium Azide, 0.05% BSA, 50% Glycerol, pH 7.3.
Isotype	IgG
Molecular Weight	Protein Mw: 44kDa Observed Mw: 42kDa
Storage Instruction	Store at -20°C for up to 1 year from the date of receipt, and avoid repeat freeze-thaw cycles.

TARGET INFORMATION

Gene ID	5604 5605
Gene Symbol	MAP2K1 MAP2K2
UniProt ID	MP2K1_HUMAN MP2K2_HUMAN
Immunogen Region	1-360
Immunogen Sequence	MPKKKPTPIQLNPAPDGSV NGTSSAETNLEALQKKLEEL ELDEQQRKRLEAFLTQKQKV GELKDDDFEKISELGAGNGG VVFKVSHKPSGLVMARKLIH LEIKPAIRNQIIRELQVLHE CNSPYIVGFYGAIFYSDGEIS ICMEHMDGGSLDQVLKAGR IPEQILGKVSIAVIKGLTYL REKHKIMHRDVKPSNILVNS RGEIKLCDFGVSGQLIDSMA NSFVGTSTRYSMPERLQGGTH
Specificity	Recombinant fusion protein containing a sequence corresponding to amino acids 1-360 of human MEK1/MEK2 (Q02750).

ADDITIONAL INFORMATION

Note STRICTLY FOR FURTHER SCIENTIFIC RESEARCH USE ONLY (RUO). MUST NOT TO BE USED IN DIAGNOSTIC OR THERAPEUTIC APPLICATIONS.



Western blot analysis of extracts of various cell lines, using MEK1/MEK2 antibody (STJ11102175) at 1:5000 dilution. Secondary antibody: HRP Goat Anti-Rabbit IgG (H+L) (STJS000856) at 1:10000 dilution. Lysates/proteins: 25 µg per lane. Blocking buffer: 3% nonfat dry milk in TBST. Detection: ECL Basic Kit. Exposure time: 1s.