

Anti-KRT15 antibody (357-456) [S8MR] (STJ11102168)

GENERAL INFORMATION

Product Type	Primary antibodies
Applications	WB/IF/ICC/ELISA
Host / Source	Rabbit
Reactivity	Human/Rat

PRODUCT PROPERTIES

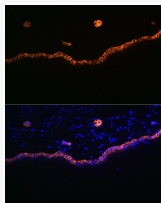
Clonality	Monoclonal
Concentration	Lot specific
Conjugation	Unconjugated
Purification	Affinity purification
Dilution Range	WB:1:500-1:1000 IF/CC:1:50-1:200 ELISA:Recommended starting concentration is 1 Mu g/mL. Please optimize the concentration based on your specific assay requirements.
Formulation	PBS with 0.02% Sodium Azide, 0.05% BSA, 50% Glycerol, pH 7.3.
Isotype	IgG
Molecular Weight	Protein Mw: 49kDa Observed Mw: 49kDa
Storage Instruction	Store at -20°C for up to 1 year from the date of receipt, and avoid repeat freeze-thaw cycles.

TARGET INFORMATION

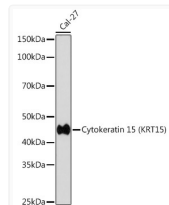
Gene ID	3866
Gene Symbol	KRT15
UniProt ID	K1C15_HUMAN
Immunogen Region	357-456
Immunogen Sequence	YATQLQIQGLIGGLEAQLS ELRCEMEAQNQEYKMLLDIK TRLEQEIATYRSLLLEGQDAK MAGIAIREASSGGGGSSSNF HINVEESVDGQVSSHKREI
Specificity	A synthetic peptide corresponding to a sequence within amino acids 357-456 of human Cytokeratin 15 (KRT15) (KRT15) (P19012).

ADDITIONAL INFORMATION

Note STRICTLY FOR FURTHER SCIENTIFIC RESEARCH USE ONLY (RUO). MUST NOT TO BE USED IN DIAGNOSTIC OR THERAPEUTIC APPLICATIONS.



Immunofluorescence analysis of rat skin using Cytokeratin 15 (KRT15) (KRT15) Rabbit monoclonal antibody (STJ11102168) at dilution of 1:100 (40x lens). Blue: DAPI for nuclear staining.



Western blot analysis of extracts of CAL 27 cells, using Cytokeratin 15 (KRT15) (KRT15) antibody (STJ11102168) at 1:1000 dilution. Secondary antibody: HRP Goat Anti-Rabbit IgG (H+L) (STJS000856) at 1:10000 dilution. Lysates/proteins: 25 Mu g per lane. Blocking buffer: 3% nonfat dry milk in TBST. Detection: ECL Basic Kit. Exposure time: 180s.