

Anti-IRF2 antibody (250-349) [S5MR] (STJ11102165)

GENERAL INFORMATION

Product Type	Primary antibodies
Applications	WB/IP/ELISA
Host / Source	Rabbit
Reactivity	Human

PRODUCT PROPERTIES

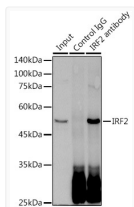
Clonality	Monoclonal
Concentration	Lot specific
Conjugation	Unconjugated
Purification	Affinity purification
Dilution Range	WB:1:500-1:1000 IP:0.5 Mu g-4 Mu g antibody for 200 Mu g-400 Mu g extracts of whole cells ELISA:Recommended starting concentration is 1 Mu g/mL. Please optimize the concentration based on your specific assay requirements.
Formulation	PBS with 0.02% Sodium Azide, 0.05% BSA, 50% Glycerol, pH 7.3.
Isotype	IgG
Molecular Weight	Protein Mw: 39kDa Observed Mw: 50kDa
Storage Instruction	Store at -20°C for up to 1 year from the date of receipt, and avoid repeat freeze-thaw cycles.

TARGET INFORMATION

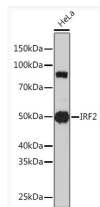
Gene ID	3660
Gene Symbol	IRF2
UniProt ID	IRF2_HUMAN
Immunogen Region	250-349
Immunogen Sequence	PHWRKRNIIEGKQYLSNMGTR GSYLLPGMASFVTSNKPDLQ VTIKEESNPVPYNSSWPPFQ DLPLSSMTPASSSRPDRE TRASVIKKTSDITQARVKSC
Specificity	A synthetic peptide corresponding to a sequence within amino acids 250-349 of human IRF2 (P14316).

ADDITIONAL INFORMATION

Note **STRICTLY FOR FURTHER SCIENTIFIC RESEARCH USE ONLY (RUO). MUST NOT TO BE USED IN DIAGNOSTIC OR THERAPEUTIC APPLICATIONS.**



Immunoprecipitation analysis of 300 Mu g extracts of HeLa cells using 3 Mu g IRF2 antibody (STJ11102165). Western blot was performed from the immunoprecipitate using IRF2 (STJ11102165) at a dilution of 1:500.



Western blot analysis of lysates from HeLa cells, using IRF2 Rabbit monoclonal antibody (STJ11102165) at 1:1000 dilution. Secondary antibody: HRP Goat Anti-Rabbit IgG (H+L) (STJS000856) at 1:10000 dilution. Lysates/proteins: 25 Mu g per lane. Blocking buffer: 3% nonfat dry milk in TBST. Detection: ECL Enhanced Kit. Exposure time: 3min.