

Anti-Histone H3 antibody (57-136) [S3MR] (STJ11102163)

GENERAL INFORMATION

Product Type	Primary antibodies
Applications	WB/IHC-P/ELISA/ChIP/ChIP-seq
Host / Source	Rabbit
Reactivity	Human/Mouse/Rat/Other

PRODUCT PROPERTIES

Clonality	Monoclonal
Concentration	Lot specific
Conjugation	Unconjugated
Purification	Affinity purification
Dilution Range	WB:1:1000-1:6000 IHC-P:1:200-1:2000 ELISA:Recommended starting concentration is 1 Mu g/mL. Please optimize the concentration based on your specific assay requirements. ChIP:2 Mu g antibody for 5 Mu g-10 Mu g of Chromatin ChIP-seq:1:50
Formulation	PBS with 0.02% Sodium Azide, 0.05% BSA, 50% Glycerol, pH 7.3.
Isotype	IgG
Molecular Weight	Protein Mw: 15kDa Observed Mw: 17kDa
Storage Instruction	Store at-20°C for up to 1 year from the date of receipt, and avoid repeat freeze-thaw cycles.

TARGET INFORMATION

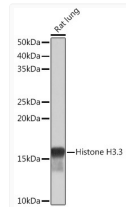
Gene ID	3020/3021
Gene Symbol	H3-3A.H3-3B
UniProt ID	H33_HUMAN
Immunogen Region	57-136
Immunogen Sequence	KSTELLIRKLPFQRLVREIA QDFKTDLRFQSAAGALQEA SEAYLVGLFEDTNLCIAHAK RVTIMPKDIQLARRIRGERA
Specificity	A synthetic peptide corresponding to a sequence within amino acids 57-136 of human Histone H3.3 (P84243).

ADDITIONAL INFORMATION

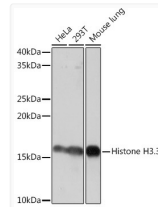
Note **STRICTLY FOR FURTHER SCIENTIFIC RESEARCH USE ONLY (RUO). MUST NOT TO BE USED IN DIAGNOSTIC OR THERAPEUTIC APPLICATIONS.**



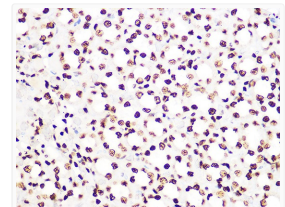
Chromatin immunoprecipitations were performed with cross-linked chromatin from HeLa cells and Histone H3. 3 rabbit monoclonal antibody (STJ11102163) at 1:1000 dilution. Secondary antibody: HRP Goat Anti-rabbit IgG (H+L) (STJS000856) at 1:10000 dilution. Lysates/proteins: 25 Mu g per lane. Blocking buffer: 3% non-fat dry milk in TBST. Detection: ECL Basic Kit. Exposure time: 1s.



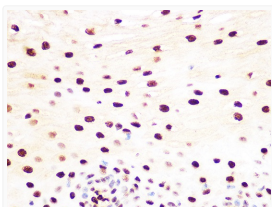
Western blot analysis of extracts of Rat lung, using Histone H3. 3 rabbit monoclonal antibody (STJ11102163) at 1:1000 dilution. Secondary antibody: HRP Goat Anti-rabbit IgG (H+L) (STJS000856) at 1:10000 dilution. Lysates/proteins: 25 Mu g per lane. Blocking buffer: 3% non-fat dry milk in TBST. Detection: ECL Basic Kit. Exposure time: 1s.



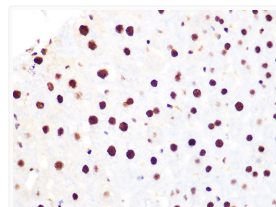
Western blot analysis of extracts of various cell lines, using Histone H3. 3 rabbit monoclonal antibody (STJ11102163) at 1:1000 dilution. Secondary antibody: HRP Goat Anti-rabbit IgG (H+L) (STJS000856) at 1:10000 dilution. Lysates/proteins: 25 Mu g per lane. Blocking buffer: 3% non-fat dry milk in TBST. Detection: ECL Basic Kit. Exposure time: 10s.



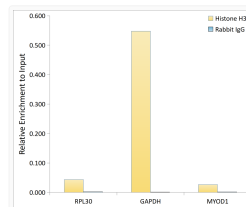
Immunohistochemistry analysis of paraffin-embedded rat kidney using Histone H3. 3 rabbit monoclonal antibody (STJ11102163) at dilution of 1:100 (40x lens). Perform microwave antigen retrieval with 10 mM Tris/EDTA buffer pH 9. 0 before commencing with immunohistochemistry staining protocol.



Immunohistochemistry analysis of paraffin-embedded human esophageal tissue using Histone H3. 3 rabbit monoclonal antibody (STJ11102163) at dilution of 1:100 (40x lens). Perform microwave antigen retrieval with 10 mM Tris/EDTA buffer pH 9. 0 before commencing with immunohistochemistry staining protocol.



Immunohistochemistry analysis of paraffin-embedded mouse liver using Histone H3. 3 rabbit monoclonal antibody (STJ11102163) at dilution of 1:100 (40x lens). Perform microwave antigen retrieval with 10 mM Tris/EDTA buffer pH 9. 0 before commencing with immunohistochemistry staining protocol.



Chromatin immunoprecipitation analysis of extracts of HeLa cells, using Histone H3. 3 antibody (STJ11102163) and rabbit IgG. The amount of immunoprecipitated DNA was checked by quantitative PCR. Histogram was constructed by the ratios of the immunoprecipitated DNA to the input.