

Anti-COL17A1 antibody (1300-1400) [S8MR] (STJ11102158)

GENERAL INFORMATION

Product Type	Primary antibodies
Applications	WB/IHC-P/ELISA
Host / Source	Rabbit
Reactivity	Human

PRODUCT PROPERTIES

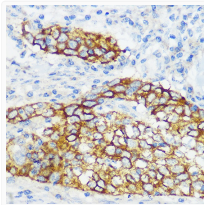
Clonality	Monoclonal
Concentration	Lot specific
Conjugation	Unconjugated
Purification	Affinity purification
Dilution Range	WB:1:500-1:1000 IHC-P:1:50-1:200 ELISA:Recommended starting concentration is 1 Mu g/mL. Please optimize the concentration based on your specific assay requirements.
Formulation	PBS with 0.02% Sodium Azide, 0.05% BSA, 50% Glycerol, pH 7.3.
Isotype	IgG
Molecular Weight	Protein Mw: 150kDa Observed Mw: 150-180kDa
Storage Instruction	Store at -20°C for up to 1 year from the date of receipt, and avoid repeat freeze-thaw cycles.

TARGET INFORMATION

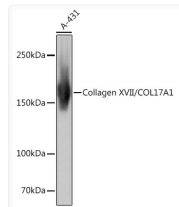
Gene ID	1308
Gene Symbol	COL17A1
UniProt ID	COHA1_HUMAN
Immunogen Region	1300-1400
Immunogen Sequence	SVRRGSSYSSSMSTGGGGAG SLGAGGAFGEAAGDRGPYGT DIGPGGGYGAAAEGGMYAGN GLLGADFAGDLDYNELAVR VSESMQRQGLLQGMAYTVQG P
Specificity	A synthetic peptide corresponding to a sequence within amino acids 1300-1400 of human Collagen XVII/COL17A1 (Q9UMD9).

ADDITIONAL INFORMATION

Note STRICTLY FOR FURTHER SCIENTIFIC RESEARCH USE ONLY (RUO). MUST NOT TO BE USED IN DIAGNOSTIC OR THERAPEUTIC APPLICATIONS.



Immunohistochemistry analysis of Collagen XVII/COL17A1 in paraffin-embedded human esophageal cancer using Collagen XVII/COL17A1 Rabbit monoclonal antibody (STJ11102158) at dilution of 1:100 (40x lens). Perform microwave antigen retrieval with 10 mM Tris/EDTA buffer pH 9.0 before commencing with immunohistochemistry staining protocol.



Western blot analysis of lysates from A-431 cells, using Collagen XVII/COL17A1 Rabbit monoclonal antibody (STJ11102158) at 1:1000 dilution. Secondary antibody: HRP Goat Anti-Rabbit IgG (H+L) (STJS000856) at 1:10000 dilution. Lysates/proteins: 25 Mu g per lane. Blocking buffer: 3% nonfat dry milk in TBST. Detection: ECL Basic Kit. Exposure time: 1s.