

Anti-MUC2 antibody (5000-5100) [S1MR] (STJ11102151)

GENERAL INFORMATION

Product Type	Primary antibodies
Applications	WB/IHC-P/ELISA
Host / Source	Rabbit
Reactivity	Human/Mouse/Rat

PRODUCT PROPERTIES

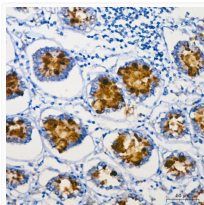
Clonality	Monoclonal
Concentration	Lot specific
Conjugation	Unconjugated
Purification	Affinity purification
Dilution Range	WB:1:1000-1:2000 IHC-P:1:500-1:2000 ELISA:Recommended starting concentration is 1 Mu g/mL. Please optimize the concentration based on your specific assay requirements.
Formulation	PBS with 0.02% Sodium Azide, 0.05% BSA, 50% Glycerol, pH 7.3.
Isotype	IgG
Molecular Weight	Protein Mw: 551kDa Observed Mw: 110kDa
Storage Instruction	Store at -20°C for up to 1 year from the date of receipt, and avoid repeat freeze-thaw cycles.

TARGET INFORMATION

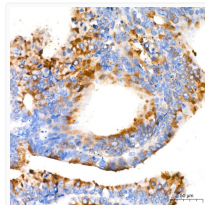
Gene ID	4583
Gene Symbol	MUC2
UniProt ID	MUC2_HUMAN
Immunogen Region	5000-5100
Immunogen Sequence	PDNQHVILKPGDFKSDPKNN CTFVSCVKIHNQLISSVSNITCPNFDASICIPGSITFMPNGCCKTCTPRNETRVPCSTVPTTTEVSYAGCTKTVLMNHCS G
Specificity	A synthetic peptide corresponding to a sequence within amino acids 5000-5100 of human MUC2 (Q02817).

ADDITIONAL INFORMATION

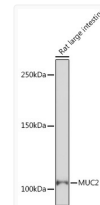
Note STRICTLY FOR FURTHER SCIENTIFIC RESEARCH USE ONLY (RUO). MUST NOT TO BE USED IN DIAGNOSTIC OR THERAPEUTIC APPLICATIONS.



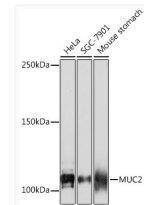
Immunohistochemistry analysis of MUC2 in paraffin-embedded human colon using MUC2 Rabbit monoclonal antibody (STJ11102151) at dilution of 1:500 (40x lens). Perform high pressure antigen retrieval with 10 mM citrate buffer pH 6.0 before commencing with immunohistochemistry staining protocol.



Immunohistochemistry analysis of MUC2 in paraffin-embedded human colon carcinoma using MUC2 Rabbit monoclonal antibody (STJ11102151) at dilution of 1:500 (40x lens). Perform high pressure antigen retrieval with 10 mM citrate buffer pH 6.0 before commencing with immunohistochemistry staining protocol.



Western blot analysis of lysates from Rat large intestine, using MUC2 Rabbit monoclonal antibody (STJ11102151) at 1:1000 dilution. Secondary antibody: HRP Goat Anti-Rabbit IgG (H+L) (STJS000856) at 1:10000 dilution. Lysates/proteins: 25 Mu g per lane. Blocking buffer: 3% nonfat dry milk in TBST. Detection: ECL Enhanced Kit. Exposure time: 3min.



Western blot analysis of various lysates using MUC2 Rabbit monoclonal antibody (STJ11102151) at 1:1000 dilution. Secondary antibody: HRP Goat Anti-Rabbit IgG (H+L) (STJS000856) at 1:10000 dilution. Lysates/proteins: 25 Mu g per lane. Blocking buffer: 3% nonfat dry milk in TBST. Detection: ECL Basic Kit. Exposure time: 90s.