

## Anti-KDM5A antibody (1400-1690) [S7MR] (STJ11102147)

### GENERAL INFORMATION

Product Type	Primary antibodies
Applications	WB/IP/ELISA/ChIP
Host / Source	Rabbit
Reactivity	Human/Mouse/Rat

### PRODUCT PROPERTIES

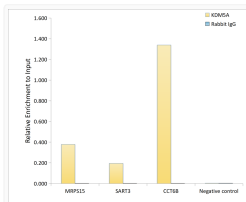
Clonality	Monoclonal
Concentration	Lot specific
Conjugation	Unconjugated
Purification	Affinity purification
Dilution Range	WB:1:500-1:2000 IP:0.5 Mu g-4 Mu g antibody for 200 Mu g-400 Mu g extracts of whole cells ELISA:Recommended starting concentration is 1 Mu g/mL. Please optimize the concentration based on your specific assay requirements. ChIP:2 Mu g anti
Formulation	PBS with 0.02% Sodium Azide, 0.05% BSA, 50% Glycerol, pH 7.3.
Isotype	IgG
Molecular Weight	Protein Mw: 192kDa Observed Mw: 200kDa
Storage Instruction	Store at -20°C for up to 1 year from the date of receipt, and avoid repeat freeze-thaw cycles.

### TARGET INFORMATION

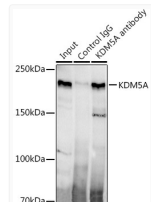
Gene ID	<a href="#">5927</a>
Gene Symbol	<a href="#">KDM5A</a>
UniProt ID	<a href="#">KDM5A_HUMAN</a>
Immunogen Region	1400-1690
Immunogen Sequence	HAYSSASKSCSQGSSTPRKQ PRKSPLVPRSLPEPPVLELSP GAKAQLEELMMVGDLLVSL DETQHIWRILQATHPPSEDR FLHIMEDDSMEEKPLKVKGK DSSEKKRKRKLEKVEQLFGE GKQKSKELKMKMDKPRKKKLK LGADKSKELNKLAKLAKEE ERKKKKEKAAAKVELVKES TEKKREKVLDPISKYDWSG AEESDDENAVCAAQNCQRPC KDKVDVWVQCDDGGCDEWFHQ
Specificity	Recombinant fusion protein containing a sequence corresponding to amino acids 1400-1690 of human KDM5A (P29375).

### ADDITIONAL INFORMATION

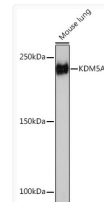
Note STRICTLY FOR FURTHER SCIENTIFIC RESEARCH USE ONLY (RUO). MUST NOT TO BE USED IN DIAGNOSTIC OR THERAPEUTIC APPLICATIONS.



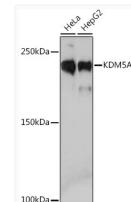
Chromatin immunoprecipitation analysis of extracts of HCT116 cells, using KDM5A antibody (STJ11102147) and rabbit IgG. The amount of immunoprecipitated DNA was checked by quantitative PCR. Histogram was constructed by the ratios of the immunoprecipitated DNA to the input.



Immunoprecipitation analysis of 300 Mu g extracts of HeLa cells using 3 Mu g KDM5A antibody (STJ11102147). Western blot was performed from the immunoprecipitate using KDM5A antibody (STJ11102147) at a dilution of 1:500.



Western blot analysis of lysates from Mouse lung, using KDM5A Rabbit monoclonal antibody (STJ11102147) at 1:1000 dilution. Secondary antibody: HRP Goat Anti-Rabbit IgG (H+L) (STJS000856) at 1:10000 dilution. Lysates/proteins: 25 Mu g per lane. Blocking buffer: 3% nonfat dry milk in TBST. Detection: ECL Enhanced Kit. Exposure time: 3min.



Western blot analysis of various lysates using KDM5A Rabbit monoclonal antibody (STJ11102147) at 1:1000 dilution. Secondary antibody: HRP Goat Anti-Rabbit IgG (H+L) (STJS000856) at 1:10000 dilution. Lysates/proteins: 25 Mu g per lane. Blocking buffer: 3% nonfat dry milk in TBST. Detection: ECL Basic Kit. Exposure time: 3min.