

Anti-VIL1 antibody (150-250) [S1MR] (STJ11102131)

GENERAL INFORMATION

Product Type	Primary antibodies
Applications	WB/IF/ICC/ELISA
Host / Source	Rabbit
Reactivity	Human

PRODUCT PROPERTIES

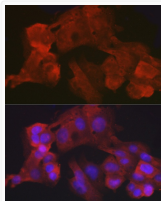
Clonality	Monoclonal
Concentration	Lot specific
Conjugation	Unconjugated
Purification	Affinity purification
Dilution Range	WB:1:500-1:2000 IF/CC:1:50-1:200 ELISA:Recommended starting concentration is 1 Mu g/mL. Please optimize the concentration based on your specific assay requirements.
Formulation	PBS with 0.02% Sodium Azide, 0.05% BSA, 50% Glycerol, pH 7.3.
Isotype	IgG
Molecular Weight	Protein Mw: 93kDa Observed Mw: 95kDa
Storage Instruction	Store at -20°C for up to 1 year from the date of receipt, and avoid repeat freeze-thaw cycles.

TARGET INFORMATION

Gene ID	7429
Gene Symbol	VIL1
UniProt ID	VILL_HUMAN
Immunogen Region	150-250
Immunogen Sequence	AGEVEMSWKSFNRGDVFLLD LGKLIQWNGPESTRMERLR GMTLAKEIRDQERGGRTYVG VVDGENELASPKLMEVMNHV LGKRRELKAAVPDTVVPEPAL K
Specificity	A synthetic peptide corresponding to a sequence within amino acids 150-250 of human Villin1 (P09327).

ADDITIONAL INFORMATION

Note STRICTLY FOR FURTHER SCIENTIFIC RESEARCH USE ONLY (RUO). MUST NOT TO BE USED IN DIAGNOSTIC OR THERAPEUTIC APPLICATIONS.



Immunofluorescence analysis of HepG2 cells using Villin1 Rabbit monoclonal antibody (STJ11102131) at dilution of 1:100 (40x lens). Blue: DAPI for nuclear staining.