

Anti-MAD2L2 antibody (100-200) [S0MR] (STJ11102120)

GENERAL INFORMATION

Product Type	Primary antibodies
Applications	WB/IHC-P/IF/ICC/ELISA
Host / Source	Rabbit
Reactivity	Human/Mouse/Rat

PRODUCT PROPERTIES

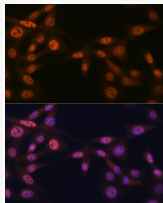
Clonality	Monoclonal
Concentration	Lot specific
Conjugation	Unconjugated
Purification	Affinity purification
Dilution Range	WB:1:500-1:1000 IHC-P:1:50-1:200 IF/ICC:1:50-1:200 ELISA:Recommended starting concentration is 1 μ g/mL. Please optimize the concentration based on your specific assay requirements.
Formulation	PBS with 0.02% Sodium Azide, 0.05% BSA, 50% Glycerol, pH 7.3.
Isotype	IgG
Molecular Weight	Protein Mw: 24kDa Observed Mw: 24kDa
Storage Instruction	Store at -20°C for up to 1 year from the date of receipt, and avoid repeat freeze-thaw cycles.

TARGET INFORMATION

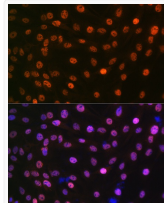
Gene ID	10459
Gene Symbol	MAD2L2
UniProt ID	MD2L2_HUMAN
Immunogen Region	100-200
Immunogen Sequence	FEITQPPLLSISSDSLSSHV EQLLRAFILKISVCDAVLDH NPPGCTFTVLVHTREAATRNM MEKIQVIKDFPWILADEQDV HMHDPRLIPLKMTSDILKM Q
Specificity	A synthetic peptide corresponding to a sequence within amino acids 100-200 of human MAD2B/MAD2B/MAD2L2 (Q9UI95).

ADDITIONAL INFORMATION

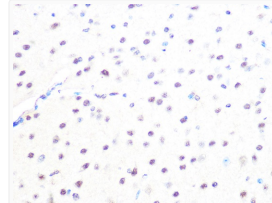
Note **STRICTLY FOR FURTHER SCIENTIFIC RESEARCH USE ONLY (RUO). MUST NOT TO BE USED IN DIAGNOSTIC OR THERAPEUTIC APPLICATIONS.**



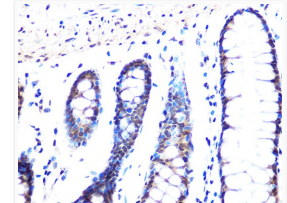
Immunofluorescence analysis of NIH-3T3 cells using MAD2B/MAD2B/MAD2L2 Rabbit monoclonal antibody (STJ11102120) at dilution of 1:100 (40x lens). Blue: DAPI for nuclear staining.



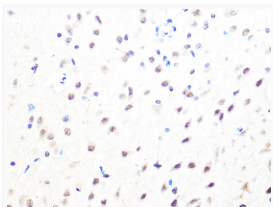
Immunofluorescence analysis of C6 cells using MAD2B/MAD2B/MAD2L2 Rabbit monoclonal antibody (STJ11102120) at dilution of 1:100 (40x lens). Blue: DAPI for nuclear staining.



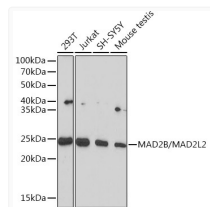
Immunohistochemistry analysis of paraffin-embedded mouse brain using MAD2B/MAD2B/MAD2L2 Rabbit monoclonal antibody (STJ11102120) at dilution of 1:100 (40x lens). Perform microwave antigen retrieval with 10 mM PBS buffer pH 7.2 before commencing with immunohistochemistry staining protocol.



Immunohistochemistry analysis of paraffin-embedded human colon using MAD2B/MAD2B/MAD2L2 Rabbit monoclonal antibody (STJ11102120) at dilution of 1:100 (40x lens). Perform microwave antigen retrieval with 10 mM PBS buffer pH 7.2 before commencing with immunohistochemistry staining protocol.



Immunohistochemistry analysis of paraffin-embedded rat brain using MAD2B/MAD2B/MAD2L2 Rabbit monoclonal antibody (STJ11102120) at dilution of 1:100 (40x lens). Perform microwave antigen retrieval with 10 mM PBS buffer pH 7.2 before commencing with immunohistochemistry staining protocol.



Western blot analysis of extracts of various cell lines, using MAD2B/MAD2B/MAD2L2 Rabbit monoclonal antibody (STJ11102120) at 1:1000 dilution. Secondary antibody: HRP Goat Anti-Rabbit IgG (H+L) (STJS000856) at 1:10000 dilution. Lysates/proteins: 25 μ g per lane. Blocking buffer: 3% nonfat dry milk in TBST. Detection: ECL Basic Kit. Exposure time: 90s.