

## Anti-PRPF8 antibody (2200-2335) [S7MR] (STJ11102107)

### GENERAL INFORMATION

Product Type	Primary antibodies
Applications	WB/IHC-P/IF/ICC/ELISA
Host / Source	Rabbit
Reactivity	Human/Mouse/Rat

### PRODUCT PROPERTIES

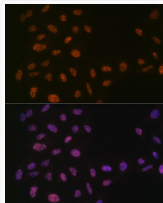
Clonality	Monoclonal
Concentration	Lot specific
Conjugation	Unconjugated
Purification	Affinity purification
Dilution Range	WB:1:500-1:2000 IHC-P:1:50-1:200 IF/ICC:1:50-1:200 ELISA:Recommended starting concentration is 1 $\mu$ g/mL. Please optimize the concentration based on your specific assay requirements.
Formulation	PBS with 0.02% Sodium Azide, 0.05% BSA, 50% Glycerol, pH 7.3.
Isotype	IgG
Molecular Weight	Protein Mw: 274kDa Observed Mw: 274kDa
Storage Instruction	Store at -20°C for up to 1 year from the date of receipt, and avoid repeat freeze-thaw cycles.

### TARGET INFORMATION

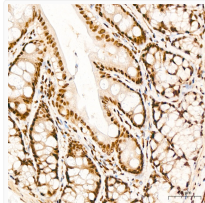
Gene ID	<a href="#">10594</a>
Gene Symbol	<a href="#">PRPF8</a>
UniProt ID	<a href="#">PRP8_HUMAN</a>
Immunogen Region	2200-2335
Immunogen Sequence	MADNPSWDGEKTIITCSFT PGSCTLTAYKLTPSGYEWGR QNTDKGNNPKGYLPSHYERV QMLLSDRFLGFFMVAQSSW NYNFMGVRHDPNMKYELQLA NPKEFYHEVHRPSHFLNFAL LQEGEVYSADREDLYA
Specificity	Recombinant fusion protein containing a sequence corresponding to amino acids 2200-2335 of human PRPF8 (Q6P2Q9).

### ADDITIONAL INFORMATION

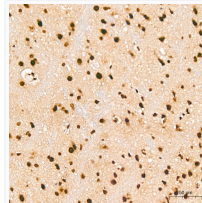
Note STRICTLY FOR FURTHER SCIENTIFIC RESEARCH USE ONLY (RUO). MUST NOT TO BE USED IN DIAGNOSTIC OR THERAPEUTIC APPLICATIONS.



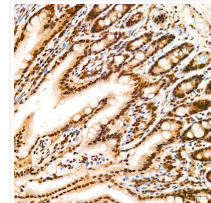
Immunofluorescence analysis of U-2 OS cells using PRPF8 Rabbit monoclonal antibody (STJ11102107) at dilution of 1:100 (40x lens). Secondary antibody: Cy3 Goat Anti-Rabbit IgG (H+L) at 1:500 dilution. Blue: DAPI for nuclear staining.



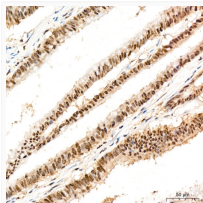
Immunohistochemistry analysis of PRPF8 in paraffin-embedded rat colon tissue using PRPF8 Rabbit monoclonal antibody (STJ11102107) at a dilution of 1:200 (40x lens). High pressure antigen retrieval was performed with 0.01 M citrate buffer (pH 6.0) prior to immunohistochemistry staining.



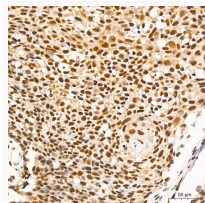
Immunohistochemistry analysis of PRPF8 in paraffin-embedded mouse brain tissue using PRPF8 Rabbit monoclonal antibody (STJ11102107) at a dilution of 1:200 (40x lens). High pressure antigen retrieval was performed with 0.01 M citrate buffer (pH 6.0) prior to immunohistochemistry staining.



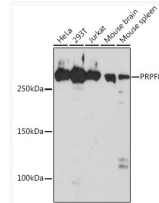
Immunohistochemistry analysis of PRPF8 in paraffin-embedded mouse colon tissue using PRPF8 Rabbit monoclonal antibody (STJ11102107) at a dilution of 1:200 (40x lens). High pressure antigen retrieval was performed with 0.01 M citrate buffer (pH 6.0) prior to immunohistochemistry staining.



Immunohistochemistry analysis of PRPF8 in paraffin-embedded human colon carcinoma tissue using PRPF8 Rabbit monoclonal antibody (STJ11102107) at a dilution of 1:200 (40x lens). High pressure antigen retrieval was performed with 0.01 M citrate buffer (pH 6.0) prior to immunohistochemistry staining.



Immunohistochemistry analysis of PRPF8 in paraffin-embedded human cervix cancer tissue using PRPF8 Rabbit monoclonal antibody (STJ11102107) at a dilution of 1:200 (40x lens). High pressure antigen retrieval was performed with 0.01 M citrate buffer (pH 6.0) prior to immunohistochemistry staining.



Western blot analysis of various lysates using PRPF8 Rabbit monoclonal antibody (STJ11102107) at 1:1000 dilution. Secondary antibody: HRP Goat Anti-Rabbit IgG (H+L) (STJS000856) at 1:10000 dilution. Lysates/proteins: 25  $\mu$ g per lane. Blocking buffer: 3% nonfat dry milk in TBST. Detection: ECL Basic Kit. Exposure time: 30s.