

## Anti-PROC antibody (300-461) [S6MR] (STJ11102096)

### GENERAL INFORMATION

Product Type	Primary antibodies
Applications	WB/IF/ICC/ELISA
Host / Source	Rabbit
Reactivity	Human/Mouse/Rat

### PRODUCT PROPERTIES

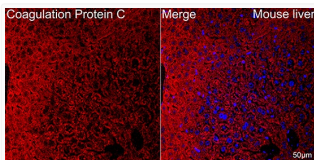
Clonality	Monoclonal
Concentration	Lot specific
Conjugation	Unconjugated
Purification	Affinity purification
Dilution Range	WB:1:500-1:2000 IF/CC:1:50-1:200 ELISA:Recommended starting concentration is 1 $\mu$ g/mL. Please optimize the concentration based on your specific assay requirements.
Formulation	PBS with 0.02% Sodium Azide, 0.05% BSA, 50% Glycerol, pH 7.3.
Isotype	IgG
Molecular Weight	Protein Mw: 52kDa Observed Mw: 52kDa
Storage Instruction	Store at -20°C for up to 1 year from the date of receipt, and avoid repeat freeze-thaw cycles.

### TARGET INFORMATION

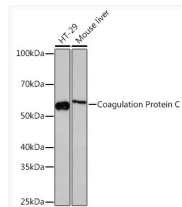
Gene ID	<a href="#">5624</a>
Gene Symbol	<a href="#">PROC</a>
UniProt ID	<a href="#">PROC_HUMAN</a>
Immunogen Region	300-461
Immunogen Sequence	IALLHLAQPATLSQTIVPIC LPDSGLAERELNQAGQETLV TGWGYHSSREKEAKRNRTFV LNFKIPVVPHECSEVMSN MYSENMLCAGILGDRQDACE GDSGGPMVASFHGTWFLVGL VSWGEGCGLLHNYGVYTKVS RYLDWIHGHIRDKEAPQKSW AP
Specificity	Recombinant fusion protein containing a sequence corresponding to amino acids 300-461 of human Coagulation Coagulation Protein C (P04070).

### ADDITIONAL INFORMATION

Note **STRICTLY FOR FURTHER SCIENTIFIC RESEARCH USE ONLY (RUO). MUST NOT TO BE USED IN DIAGNOSTIC OR THERAPEUTIC APPLICATIONS.**



Confocal imaging of paraffin-embedded Mouse liver tissue using Coagulation Protein C Rabbit monoclonal antibody (STJ11102096, dilution 1:100) followed by a further incubation with Cy3 Goat Anti-Rabbit IgG (H+L) (dilution 1:500) (Red). DAPI was used for nuclear staining (Blue). Objective: 40x. Perform high pressure antigen retrieval with 0.01 M citrate buffer (pH 6.0) prior to IF staining.



Western blot analysis of various lysates using Coagulation Coagulation Protein C Rabbit monoclonal antibody (STJ11102096) at 1:1000 dilution. Secondary antibody: HRP Goat Anti-Rabbit IgG (H+L) (STJS000856) at 1:10000 dilution. Lysates/proteins: 25  $\mu$ g per lane. Blocking buffer: 3% nonfat dry milk in TBST. Detection: ECL Basic Kit. Exposure time: 3min.