

Anti-CSNK2B antibody (101-215) [S2MR] (STJ11102092)

GENERAL INFORMATION

Product Type	Primary antibodies
Applications	WB/IF/ICC/ELISA
Host / Source	Rabbit
Reactivity	Human/Mouse/Rat

PRODUCT PROPERTIES

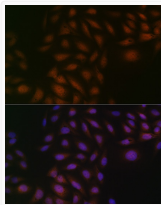
Clonality	Monoclonal
Concentration	Lot specific
Conjugation	Unconjugated
Purification	Affinity purification
Dilution Range	WB:1:500-1:1000 IF/CC:1:50-1:200 ELISA:Recommended starting concentration is 1 µg/mL. Please optimize the concentration based on your specific assay requirements.
Formulation	PBS with 0.02% Sodium Azide, 0.05% BSA, 50% Glycerol, pH 7.3.
Isotype	IgG
Molecular Weight	Protein Mw: 25kDa Observed Mw: 25kDa
Storage Instruction	Store at -20°C for up to 1 year from the date of receipt, and avoid repeat freeze-thaw cycles.

TARGET INFORMATION

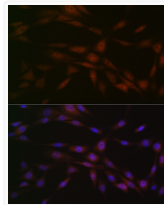
Gene ID	1460
Gene Symbol	CSNK2B
UniProt ID	CSK2B_HUMAN
Immunogen Region	101-215
Immunogen Sequence	YQQGDFGYCPRVYCENQPML PIGLSDIPGEAMVKLYCPKC MDVYTPKSSRRHHTDGAYFG TGFPHMLFMVHPEYRPKRPA NQFVPRLYGFKIHPMAYQLQ LQAASNFKSPVKTIR
Specificity	Recombinant fusion protein containing a sequence corresponding to amino acids 101-215 of human Casein Kinase 2 beta (CSNK2B) (CSNK2B) (P67870).

ADDITIONAL INFORMATION

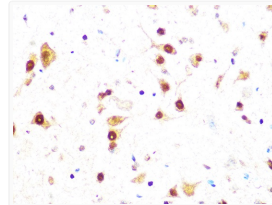
Note STRICTLY FOR FURTHER SCIENTIFIC RESEARCH USE ONLY (RUO). MUST NOT TO BE USED IN DIAGNOSTIC OR THERAPEUTIC APPLICATIONS.



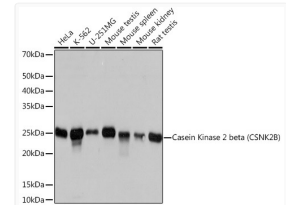
Immunofluorescence analysis of U-2 OS cells using Casein Kinase 2 beta (CSNK2B) (CSNK2B) Rabbit monoclonal antibody (STJ11102092) at dilution of 1:100 (40x lens). Secondary antibody: Cy3 Goat Anti-Rabbit IgG (H+L) at 1:500 dilution. Blue: DAPI for nuclear staining.



Immunofluorescence analysis of NIH-3T3 cells using Casein Kinase 2 beta (CSNK2B) (CSNK2B) Rabbit monoclonal antibody (STJ11102092) at dilution of 1:100 (40x lens). Secondary antibody: Cy3 Goat Anti-Rabbit IgG (H+L) at 1:500 dilution. Blue: DAPI for nuclear staining.



Immunohistochemistry analysis of Casein Kinase 2 beta (CSNK2B) in paraffin-embedded mouse spinal cord using Casein Kinase 2 beta (CSNK2B) (CSNK2B) Rabbit monoclonal antibody (STJ11102092) at dilution of 1:100 (40x lens). Perform microwave antigen retrieval with 10 mM PBS buffer pH 7.2 before commencing with immunohistochemistry staining protocol.



Western blot analysis of various lysates using Casein Kinase 2 beta (CSNK2B) (CSNK2B) Rabbit monoclonal antibody (STJ11102092) at 1:1000 dilution. Secondary antibody: HRP Goat Anti-Rabbit IgG (H+L) (STJS000856) at 1:10000 dilution. Lysates/proteins: 25 µg per lane. Blocking buffer: 3% nonfat dry milk in TBST. Detection: ECL Basic Kit. Exposure time: 3s.