

## Anti-ACTR3 antibody (319-418) [S1MR] (STJ11102091)

### GENERAL INFORMATION

Product Type	Primary antibodies
Applications	WB/IHC-P/IF/ICC/ELISA
Host / Source	Rabbit
Reactivity	Human/Mouse/Rat

### PRODUCT PROPERTIES

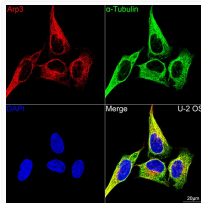
Clonality	Monoclonal
Concentration	Lot specific
Conjugation	Unconjugated
Purification	Affinity purification
Dilution Range	WB:1:500-1:2000 IHC-P:1:50-1:200 IF/ICC:1:50-1:200 ELISA:Recommended starting concentration is 1 Mu g/mL. Please optimize the concentration based on your specific assay requirements.
Formulation	PBS with 0.02% Sodium Azide, 0.05% BSA, 50% Glycerol, pH 7.3.
Isotype	IgG
Molecular Weight	Protein Mw: 47kDa Observed Mw: 47kDa
Storage Instruction	Store at -20°C for up to 1 year from the date of receipt, and avoid repeat freeze-thaw cycles.

### TARGET INFORMATION

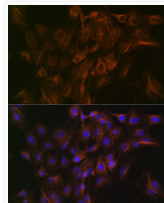
Gene ID	<a href="#">10096</a>
Gene Symbol	<a href="#">ACTR3</a>
UniProt ID	<a href="#">ARP3_HUMAN</a>
Immunogen Region	319-418
Immunogen Sequence	IVLSGGSTMFRDFGRRLQRD LKRTVDARKLKLSEELSGGRL KPKPIDVQVITHMQRYAVW FGGSMFASTPEFYQVCHTKK DYEEIGPSICRHNPFVFGVMS
Specificity	A synthetic peptide corresponding to a sequence within amino acids 319-418 of human Arp3 (P61158).

### ADDITIONAL INFORMATION

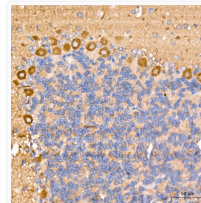
Note STRICTLY FOR FURTHER SCIENTIFIC RESEARCH USE ONLY (RUO). MUST NOT TO BE USED IN DIAGNOSTIC OR THERAPEUTIC APPLICATIONS.



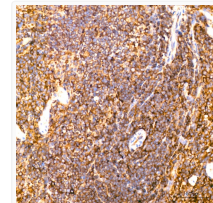
Confocal imaging of U-2 OS cells using Arp3 Rabbit monoclonal antibody (STJ11102091, dilution 1:100) (Red). The cells were counterstained with Alpha-Tubulin Mouse monoclonal antibody (dilution 1:400) (Green). DAPI was used for nuclear staining (blue). Objective: 100x.



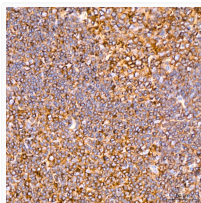
Immunofluorescence analysis of C6 cells using Arp3 Rabbit monoclonal antibody (STJ11102091) at dilution of 1:100 (40x lens). Blue: DAPI for nuclear staining.



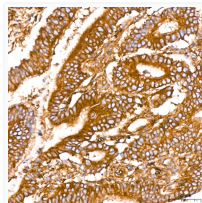
Immunohistochemistry analysis of Arp3 in paraffin-embedded rat brain tissue using Arp3 Rabbit monoclonal antibody (STJ11102091) at a dilution of 1:200 (40x lens). High pressure antigen retrieval was performed with 0.01 M citrate buffer (pH 6.0) prior to immunohistochemistry staining.



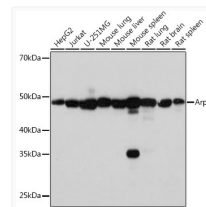
Immunohistochemistry analysis of Arp3 in paraffin-embedded mouse spleen tissue using Arp3 Rabbit monoclonal antibody (STJ11102091) at a dilution of 1:200 (40x lens). High pressure antigen retrieval was performed with 0.01 M citrate buffer (pH 6.0) prior to immunohistochemistry staining.



Immunohistochemistry analysis of Arp3 in paraffin-embedded human tonsil tissue using Arp3 Rabbit monoclonal antibody (STJ11102091) at a dilution of 1:200 (40x lens). High pressure antigen retrieval was performed with 0.01 M citrate buffer (pH 6.0) prior to immunohistochemistry staining.



Immunohistochemistry analysis of Arp3 in paraffin-embedded human colon carcinoma tissue using Arp3 Rabbit monoclonal antibody (STJ11102091) at a dilution of 1:200 (40x lens). High pressure antigen retrieval was performed with 0.01 M citrate buffer (pH 6.0) prior to immunohistochemistry staining.



Western blot analysis of extracts of various cell lines, using Arp3 Rabbit monoclonal antibody (STJ11102091) at 1:1000 dilution. Secondary antibody: HRP Goat Anti-Rabbit IgG (H+L) (STJS000856) at 1:10000 dilution. Lysates/proteins: 25 Mu g per lane. Blocking buffer: 3% nonfat dry milk in TBST. Detection: ECL Basic Kit. Exposure time: 3s.