

Anti-USP10 antibody (1-100) [S4MR] (STJ11102084)

GENERAL INFORMATION

Product Type	Primary antibodies
Applications	WB/IF/ICC/ELISA
Host / Source	Rabbit
Reactivity	Human/Mouse

PRODUCT PROPERTIES

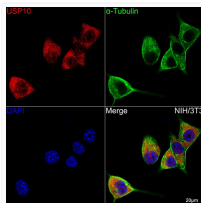
Clonality	Monoclonal
Concentration	Lot specific
Conjugation	Unconjugated
Purification	Affinity purification
Dilution Range	WB:1:1000-1:2000 IF/CC:1:50-1:200 ELISA:Recommended starting concentration is 1 Mu g/mL. Please optimize the concentration based on your specific assay requirements.
Formulation	PBS with 0.02% Sodium Azide, 0.05% BSA, 50% Glycerol, pH 7.3.
Isotype	IgG
Molecular Weight	Protein Mw: 87kDa Observed Mw: 110kDa
Storage Instruction	Store at -20°C for up to 1 year from the date of receipt, and avoid repeat freeze-thaw cycles.

TARGET INFORMATION

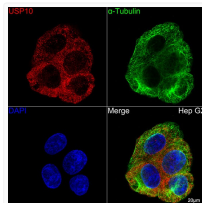
Gene ID	9100
Gene Symbol	USP10
UniProt ID	UBP10_HUMAN
Immunogen Region	1-100
Immunogen Sequence	MALHSPQYIFGDFSPDEFNQ FVTPRSSVELPPYSGTVLC GTQAVDKLPDGQEYQRIEFG VDEVIEPSDTLPRTPSYSSIS STLNPQAPEFILGCTASKIT
Specificity	A synthetic peptide corresponding to a sequence within amino acids 1-100 of human USP10 (Q14694).

ADDITIONAL INFORMATION

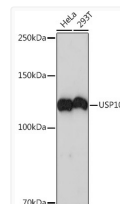
Note STRICTLY FOR FURTHER SCIENTIFIC RESEARCH USE ONLY (RUO). MUST NOT TO BE USED IN DIAGNOSTIC OR THERAPEUTIC APPLICATIONS.



Confocal imaging of NIH/3T3 cells using USP10 Rabbit monoclonal antibody (STJ11102084, at dilution of 1:100) (Red). The cells were counterstained with Alpha-Tubulin Mouse monoclonal antibody (dilution 1:400) (Green). DAPI was used for nuclear staining (blue). Objective: 100x.



Confocal imaging of Hep G2 cells using USP10 Rabbit monoclonal antibody (STJ11102084, at dilution of 1:100) (Red). The cells were counterstained with Alpha-Tubulin Mouse monoclonal antibody (dilution 1:400) (Green). DAPI was used for nuclear staining (blue). Objective: 100x.



Western blot analysis of extracts of various cell lines, using USP10 Rabbit monoclonal antibody (STJ11102084) at 1:1000 dilution. Secondary antibody: HRP Goat Anti-Rabbit IgG (H+L) (STJS000856) at 1:10000 dilution. Lysates/proteins: 25 Mu g per lane. Blocking buffer: 3% nonfat dry milk in TBST. Detection: ECL Basic Kit. Exposure time: 3min.