

Anti-ITPR1 antibody (2200-2300) [S1MR] (STJ11102081)

GENERAL INFORMATION

Product Type	Primary antibodies
Applications	WB/IHC-P/IF/ICC/ELISA
Host / Source	Rabbit
Reactivity	Mouse/Rat

PRODUCT PROPERTIES

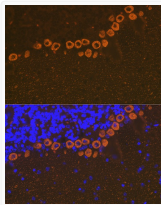
Clonality	Monoclonal
Concentration	Lot specific
Conjugation	Unconjugated
Purification	Affinity purification
Dilution Range	WB:1:1000-1:2000 IHC-P:1:200-1:2000 IF/ICC:1:100-1:1000 ELISA:Recommended starting concentration is 1 μ g/mL. Please optimize the concentration based on your specific assay requirements.
Formulation	PBS with 0.02% Sodium Azide, 0.05% BSA, 50% Glycerol, pH 7.3.
Isotype	IgG
Molecular Weight	Protein Mw: 314kDa Observed Mw: 320kDa
Storage Instruction	Store at -20°C for up to 1 year from the date of receipt, and avoid repeat freeze-thaw cycles.

TARGET INFORMATION

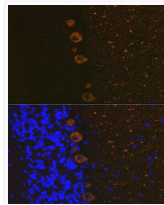
Gene ID	3708
Gene Symbol	ITPR1
UniProt ID	ITPR1_HUMAN
Immunogen Region	2200-2300
Immunogen Sequence	HTAQIEIVRLDRTMEQIVFP VPSICEFLTKESKLRIYYTT ERDEQGSKINDFFLRSEDLF NEMNWQKKLRAQPVLYWCAR NMSFWSSISFNLAFLMNLV A
Specificity	A synthetic peptide corresponding to a sequence within amino acids 2200-2300 of human IP3R (Q14643).

ADDITIONAL INFORMATION

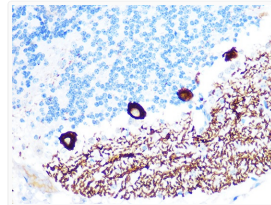
Note STRICTLY FOR FURTHER SCIENTIFIC RESEARCH USE ONLY (RUO). MUST NOT TO BE USED IN DIAGNOSTIC OR THERAPEUTIC APPLICATIONS.



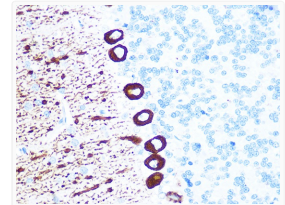
Immunofluorescence analysis of mouse brain using IP3R Rabbit monoclonal antibody (STJ11102081) at dilution of 1:100 (40x lens). Blue: DAPI for nuclear staining.



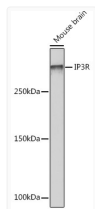
Immunofluorescence analysis of rat brain using IP3R Rabbit monoclonal antibody (STJ11102081) at dilution of 1:100 (40x lens). Blue: DAPI for nuclear staining.



Immunohistochemistry analysis of paraffin-embedded mouse brain using IP3R Rabbit monoclonal antibody (STJ11102081) at dilution of 1:100 (40x lens). Perform microwave antigen retrieval with 10 mM PBS buffer pH 7.2 before commencing with immunohistochemistry staining protocol.



Immunohistochemistry analysis of paraffin-embedded rat brain using IP3R Rabbit monoclonal antibody (STJ11102081) at dilution of 1:100 (40x lens). Perform microwave antigen retrieval with 10 mM PBS buffer pH 7.2 before commencing with immunohistochemistry staining protocol.



Western blot analysis of extracts of Mouse brain, using IP3R Rabbit monoclonal antibody (STJ11102081) at 1:1000 dilution. Secondary antibody: HRP Goat Anti-Rabbit IgG (H+L) (STJS000856) at 1:10000 dilution. Lysates/proteins: 25 μ g per lane. Blocking buffer: 3% nonfat dry milk in TBST. Detection: ECL Basic Kit. Exposure time: 90s.