

## Anti-HAT1 antibody (200-400) [S8MR] (STJ11102078)

### GENERAL INFORMATION

Product Type	Primary antibodies
Applications	WB/IHC-P/IF/ICC/ELISA
Host / Source	Rabbit
Reactivity	Human/Mouse/Rat

### PRODUCT PROPERTIES

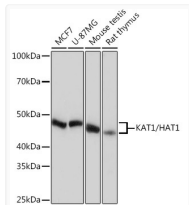
Clonality	Monoclonal
Concentration	Lot specific
Conjugation	Unconjugated
Purification	Affinity purification
Dilution Range	WB:1:500-1:2000 IHC-P:1:50-1:200 IF/ICC:1:50-1:200 ELISA:Recommended starting concentration is 1 Mu g/mL. Please optimize the concentration based on your specific assay requirements.
Formulation	PBS with 0.02% Sodium Azide, 0.05% BSA, 50% Glycerol, pH 7.3.
Isotype	IgG
Molecular Weight	Protein Mw: 50kDa Observed Mw: 49kDa
Storage Instruction	Store at -20°C for up to 1 year from the date of receipt, and avoid repeat freeze-thaw cycles.

### TARGET INFORMATION

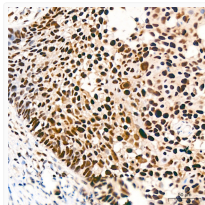
Gene ID	<a href="#">8520</a>
Gene Symbol	<a href="#">HAT1</a>
UniProt ID	<a href="#">HAT1_HUMAN</a>
Immunogen Region	200-400
Immunogen Sequence	HYFLVFEKYNKDGATLFATV GYMTVYNYVYPDKTRPRVS QMLILTPFQGQGHGAQLLET VHRYYTEFPTVLDITAEADPS KSYVKLRDFVLVKLCQDLPC FSREKLMQGFNEDMVEAQQ KFKINKQHARRVYEILRLLV TDMSDAEQYRSYRLDIKRRLL ISPYKQKQRDLAKMRKCLRP EELTNQMNQIEISMQHEQLE E
Specificity	Recombinant fusion protein containing a sequence corresponding to amino acids 200-400 of human KAT1/HAT1 (NP_003633.2).

### ADDITIONAL INFORMATION

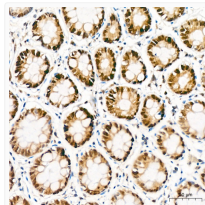
Note STRICTLY FOR FURTHER SCIENTIFIC RESEARCH USE ONLY (RUO). MUST NOT TO BE USED IN DIAGNOSTIC OR THERAPEUTIC APPLICATIONS.



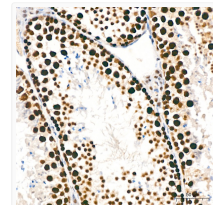
Western blot analysis of extracts of various cell lines, using KAT1/HAT1 rabbit monoclonal antibody (STJ11102078) at 1:1000 dilution. Secondary antibody: HRP Goat Anti-rabbit IgG (H+L) (STJS000856) at 1:10000 dilution. Lysates/proteins: 25 Mu g per lane. Blocking buffer: 3% non-fat dry milk in TBST. Detection: ECL Basic Kit. Exposure time: 10s.



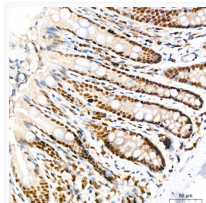
Immunohistochemistry analysis of KAT1/HAT1 in paraffin-embedded human cervix cancer tissue using KAT1/HAT1 rabbit monoclonal antibody (STJ11102078) at a dilution of 1:200 (40x lens). High pressure antigen retrieval was performed with 0.01 M citrate buffer (pH 6.0) prior to immunohistochemistry staining.



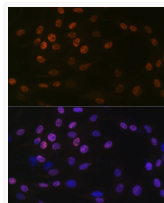
Immunohistochemistry analysis of KAT1/HAT1 in paraffin-embedded human colon tissue using KAT1/HAT1 rabbit monoclonal antibody (STJ11102078) at a dilution of 1:200 (40x lens). High pressure antigen retrieval was performed with 0.01 M citrate buffer (pH 6.0) prior to immunohistochemistry staining.



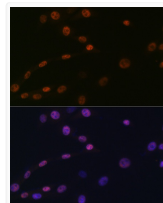
Immunohistochemistry analysis of KAT1/HAT1 in paraffin-embedded mouse testis tissue using KAT1/HAT1 rabbit monoclonal antibody (STJ11102078) at a dilution of 1:200 (40x lens). High pressure antigen retrieval was performed with 0.01 M citrate buffer (pH 6.0) prior to immunohistochemistry staining.



Immunohistochemistry analysis of KAT1/HAT1 in paraffin-embedded rat colon tissue using KAT1/HAT1 rabbit monoclonal antibody (STJ11102078) at a dilution of 1:200 (40x lens). High pressure antigen retrieval was performed with 0.01 M citrate buffer (pH 6.0) prior to immunohistochemistry staining.



Immunofluorescence analysis of C6 cells using KAT1/HAT1 rabbit monoclonal antibody (STJ11102078) at dilution of 1:100 (40x lens). Blue: DAPI for nuclear staining.



Immunofluorescence analysis of NIH-3T3 cells using KAT1/HAT1 rabbit monoclonal antibody (STJ11102078) at dilution of 1:100 (40x lens). Blue: DAPI for nuclear staining.