

Anti-DKC1 antibody (300-400) [S3MR] (STJ11102073)

GENERAL INFORMATION

Product Type	Primary antibodies
Applications	WB/IHC-P/ELISA
Host / Source	Rabbit
Reactivity	Human/Mouse/Rat

PRODUCT PROPERTIES

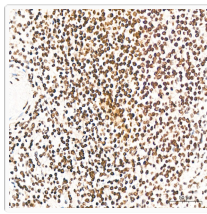
Clonality	Monoclonal
Concentration	Lot specific
Conjugation	Unconjugated
Purification	Affinity purification
Dilution Range	WB:1:500-1:2000 IHC-P:1:50-1:200 ELISA:Recommended starting concentration is 1 Mu g/mL. Please optimize the concentration based on your specific assay requirements.
Formulation	PBS with 0.02% Sodium Azide, 0.05% BSA, 50% Glycerol, pH 7.3.
Isotype	IgG
Molecular Weight	Protein Mw: 58kDa Observed Mw: 60kDa
Storage Instruction	Store at -20°C for up to 1 year from the date of receipt, and avoid repeat freeze-thaw cycles.

TARGET INFORMATION

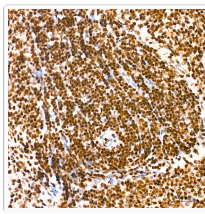
Gene ID	1736
Gene Symbol	DKC1
UniProt ID	DKC1_HUMAN
Immunogen Region	300-400
Immunogen Sequence	VMKDSAVNAICYGAKIMLPGLVRLRYEDGIEVNQEIVVITTKGEAICMAIALMTTAVISTCD HGIVAKIKRVIMERDTPRKWGLGPKASQKMLMIKQGLLDK
Specificity	A synthetic peptide corresponding to a sequence within amino acids 300-400 of human DKC1 (O60832).

ADDITIONAL INFORMATION

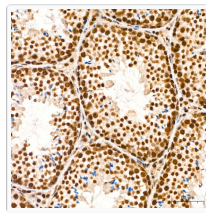
Note	STRICTLY FOR FURTHER SCIENTIFIC RESEARCH USE ONLY (RUO). MUST NOT TO BE USED IN DIAGNOSTIC OR THERAPEUTIC APPLICATIONS.
------	---



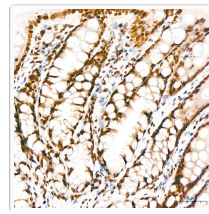
Immunohistochemistry analysis of DKC1 in paraffin-embedded human spleen tissue using DKC1 Rabbit monoclonal antibody (STJ11102073) at a dilution of 1:200 (40x lens). High pressure antigen retrieval was performed with 0.01 M citrate buffer (pH 6.0) prior to immunohistochemistry staining.



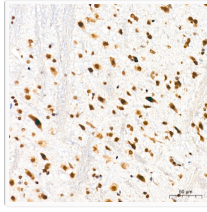
Immunohistochemistry analysis of DKC1 in paraffin-embedded rat spleen tissue using DKC1 Rabbit monoclonal antibody (STJ11102073) at a dilution of 1:200 (40x lens). High pressure antigen retrieval was performed with 0.01 M citrate buffer (pH 6.0) prior to immunohistochemistry staining.



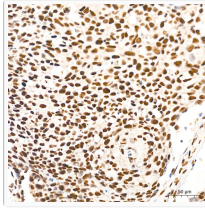
Immunohistochemistry analysis of DKC1 in paraffin-embedded mouse testis tissue using DKC1 Rabbit monoclonal antibody (STJ11102073) at a dilution of 1:200 (40x lens). High pressure antigen retrieval was performed with 0.01 M citrate buffer (pH 6.0) prior to immunohistochemistry staining.



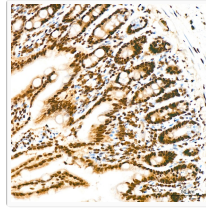
Immunohistochemistry analysis of DKC1 in paraffin-embedded rat colon tissue using DKC1 Rabbit monoclonal antibody (STJ11102073) at a dilution of 1:200 (40x lens). High pressure antigen retrieval was performed with 0.01 M citrate buffer (pH 6.0) prior to immunohistochemistry staining.



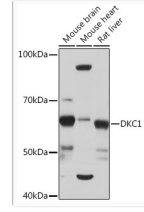
Immunohistochemistry analysis of DKC1 in paraffin-embedded mouse brain tissue using DKC1 Rabbit monoclonal antibody (STJ11102073) at a dilution of 1:200 (40x lens). High pressure antigen retrieval was performed with 0.01 M citrate buffer (pH 6.0) prior to immunohistochemistry staining.



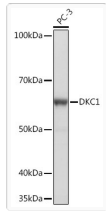
Immunohistochemistry analysis of DKC1 in paraffin-embedded human cervix cancer tissue using DKC1 Rabbit monoclonal antibody (STJ11102073) at a dilution of 1:200 (40x lens). High pressure antigen retrieval was performed with 0.01 M citrate buffer (pH 6.0) prior to immunohistochemistry staining.



Immunohistochemistry analysis of DKC1 in paraffin-embedded mouse colon tissue using DKC1 Rabbit monoclonal antibody (STJ11102073) at a dilution of 1:200 (40x lens). High pressure antigen retrieval was performed with 0.01 M citrate buffer (pH 6.0) prior to immunohistochemistry staining.



Western blot analysis of various lysates using DKC1 Rabbit monoclonal antibody (STJ11102073) at 1:1000 dilution. Secondary antibody: HRP Goat Anti-Rabbit IgG (H+L) (STJS000856) at 1:10000 dilution. Lysates/proteins: 25 μ g per lane. Blocking buffer: 3% nonfat dry milk in TBST. Detection: ECL Basic Kit. Exposure time: 10s.



Western blot analysis of lysates from PC-3 cells, using DKC1 Rabbit monoclonal antibody (STJ11102073) at 1:1000 dilution. Secondary antibody: HRP Goat Anti-Rabbit IgG (H+L) (STJS000856) at 1:10000 dilution. Lysates/proteins: 25 μ g per lane. Blocking buffer: 3% nonfat dry milk in TBST. Detection: ECL Basic Kit. Exposure time: 1s.