

Anti-PPP1CB antibody (228-327) [S6MR] (STJ11102056)

GENERAL INFORMATION

Product Type	Primary antibodies
Applications	WB/IHC-P/IF/ICC/ELISA
Host / Source	Rabbit
Reactivity	Human/Mouse/Rat

PRODUCT PROPERTIES

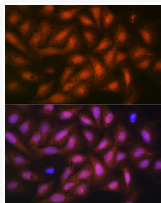
Clonality	Monoclonal
Concentration	Lot specific
Conjugation	Unconjugated
Purification	Affinity purification
Dilution Range	WB:1:500-1:1000 IHC-P:1:500-1:1000 IF/ICC:1:50-1:200 ELISA:Recommended starting concentration is 1 µg/mL. Please optimize the concentration based on your specific assay requirements.
Formulation	PBS with 0.02% Sodium Azide, 0.05% BSA, 50% Glycerol, pH 7.3.
Isotype	IgG
Molecular Weight	Protein Mw: 37kDa Observed Mw: 37kDa
Storage Instruction	Store at -20°C for up to 1 year from the date of receipt, and avoid repeat freeze-thaw cycles.

TARGET INFORMATION

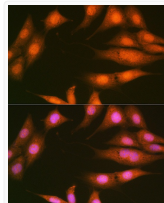
Gene ID	5500
Gene Symbol	PPP1CB
UniProt ID	PP1B_HUMAN
Immunogen Region	228-327
Immunogen Sequence	ADVVSKFLNRHDLDLICRAH QVVEDGYEFFAKRQLVTLFS APNYCGEFDNAGGMMSVDET LMCSFQILKPSEKKAKYQYG GLNSGRPVTPPRTANPPKRR
Specificity	A synthetic peptide corresponding to a sequence within amino acids 228-327 of human PP1 beta (P62140).

ADDITIONAL INFORMATION

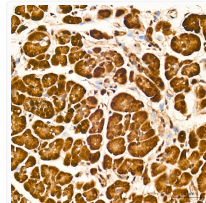
Note STRICTLY FOR FURTHER SCIENTIFIC RESEARCH USE ONLY (RUO). MUST NOT TO BE USED IN DIAGNOSTIC OR THERAPEUTIC APPLICATIONS.



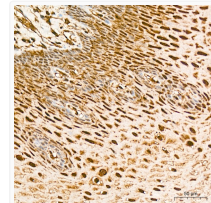
Immunofluorescence analysis of U-2 OS cells using PP1 beta Rabbit monoclonal antibody (STJ11102056) at dilution of 1:100 (40x lens). Secondary antibody: Cy3 Goat Anti-Rabbit IgG (H+L) at 1:500 dilution. Blue: DAPI for nuclear staining.



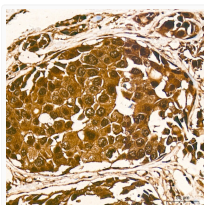
Immunofluorescence analysis of NIH-3T3 cells using PP1 beta Rabbit monoclonal antibody (STJ11102056) at dilution of 1:100 (40x lens). Secondary antibody: Cy3 Goat Anti-Rabbit IgG (H+L) at 1:500 dilution. Blue: DAPI for nuclear staining.



Immunohistochemistry analysis of PP1 beta in paraffin-embedded human pancreas tissue using PP1 beta Rabbit monoclonal antibody (STJ11102056) at a dilution of 1:1000 (40x lens). High pressure antigen retrieval was performed with 0.01 M citrate buffer (pH 6.0) prior to immunohistochemistry staining.



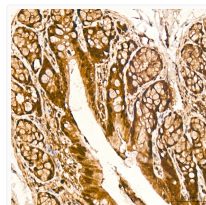
Immunohistochemistry analysis of PP1 beta in paraffin-embedded human esophagus tissue using PP1 beta Rabbit monoclonal antibody (STJ11102056) at a dilution of 1:1000 (40x lens). High pressure antigen retrieval was performed with 0.01 M citrate buffer (pH 6.0) prior to immunohistochemistry staining.



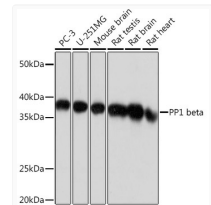
Immunohistochemistry analysis of PP1 beta in paraffin-embedded human breast cancer tissue using PP1 beta Rabbit monoclonal antibody (STJ11102056) at a dilution of 1:1000 (40x lens). High pressure antigen retrieval was performed with 0.01 M citrate buffer (pH 6.0) prior to immunohistochemistry staining.



Immunohistochemistry analysis of PP1 beta in paraffin-embedded mouse colon tissue using PP1 beta Rabbit monoclonal antibody (STJ11102056) at a dilution of 1:1000 (40x lens). High pressure antigen retrieval was performed with 0.01 M citrate buffer (pH 6.0) prior to immunohistochemistry staining.



Immunohistochemistry analysis of PP1 beta in paraffin-embedded rat colon tissue using PP1 beta Rabbit monoclonal antibody (STJ11102056) at a dilution of 1:1000 (40x lens). High pressure antigen retrieval was performed with 0.01 M citrate buffer (pH 6.0) prior to immunohistochemistry staining.



Western blot analysis of various lysates using PP1 beta Rabbit monoclonal antibody (STJ11102056) at 1:1000 dilution. Secondary antibody: HRP Goat Anti-Rabbit IgG (H+L) (STJS000856) at 1:10000 dilution. Lysates/proteins: 25 µg per lane. Blocking buffer: 3% nonfat dry milk in TBST. Detection: ECL Basic Kit. Exposure time: 1s.