

## Anti-PRKAB1 antibody (50-150) [S7MR] (STJ11102047)

### GENERAL INFORMATION

Product Type	Primary antibodies
Applications	WB/IHC-P/IF/ICC/ELISA
Host / Source	Rabbit
Reactivity	Human/Mouse/Rat

### PRODUCT PROPERTIES

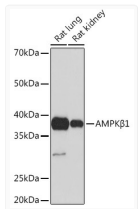
Clonality	Monoclonal
Concentration	Lot specific
Conjugation	Unconjugated
Purification	Affinity purification
Dilution Range	WB:1:500-1:1000 IHC-P:1:50-1:200 IF/ICC:1:50-1:200 ELISA:Recommended starting concentration is 1 Mu g/mL. Please optimize the concentration based on your specific assay requirements.
Formulation	PBS with 0.02% Sodium Azide, 0.05% BSA, 50% Glycerol, pH 7.3.
Isotype	IgG
Molecular Weight	Protein Mw: 30kDa Observed Mw: 38kDa
Storage Instruction	Store at -20°C for up to 1 year from the date of receipt, and avoid repeat freeze-thaw cycles.

### TARGET INFORMATION

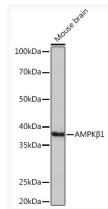
Gene ID	<a href="#">5564</a>
Gene Symbol	<a href="#">PRKAB1</a>
UniProt ID	<a href="#">AAKB1_HUMAN</a>
Immunogen Region	50-150
Immunogen Sequence	EEIKAPEKEEFLAWQHDLEV NDKAPAQARPTVFRWTGGGK EVYLSGSFNWWSKLP LTRSH NNFVAILDLPEGEHQYKFFV DGQWTHDPSEPIVTSQLGTV N
Specificity	A synthetic peptide corresponding to a sequence within amino acids 50-150 of human AMPK Beta 1 (Q9Y478).

### ADDITIONAL INFORMATION

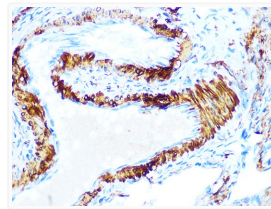
Note STRICTLY FOR FURTHER SCIENTIFIC RESEARCH USE ONLY (RUO). MUST NOT TO BE USED IN DIAGNOSTIC OR THERAPEUTIC APPLICATIONS.



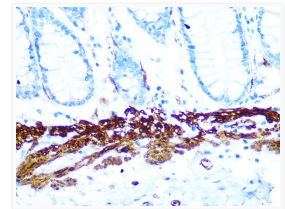
Western blot analysis of extracts of various cell lines, using AMPK Beta 1 rabbit monoclonal antibody (STJ11102047) at 1:1000 dilution. Secondary antibody: HRP Goat Anti-rabbit IgG (H+L) (STJS000856) at 1:10000 dilution. Lysates/proteins: 25 Mu g per lane. Blocking buffer: 3% non-fat dry milk in TBST. Detection: ECL Basic Kit. Exposure time: 60s.



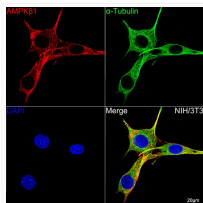
Western blot analysis of extracts of mouse brain, using AMPK Beta 1 rabbit monoclonal antibody (STJ11102047) at 1:1000 dilution. Secondary antibody: HRP Goat Anti-rabbit IgG (H+L) (STJS000856) at 1:10000 dilution. Lysates/proteins: 25 Mu g per lane. Blocking buffer: 3% non-fat dry milk in TBST. Detection: ECL Basic Kit. Exposure time: 3min.



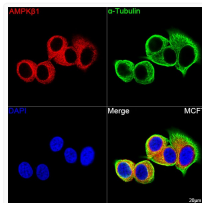
Immunohistochemistry analysis of paraffin-embedded rat ovary using AMPK Beta 1 rabbit monoclonal antibody (STJ11102047) at dilution of 1:100 (40x lens). Perform microwave antigen retrieval with 10 mM PBS buffer pH 7. 2 before commencing with immunohistochemistry staining protocol.



Immunohistochemistry analysis of paraffin-embedded human colon using AMPK Beta 1 rabbit monoclonal antibody (STJ11102047) at dilution of 1:100 (40x lens). Perform microwave antigen retrieval with 10 mM PBS buffer pH 7. 2 before commencing with immunohistochemistry staining protocol.



Confocal imaging of NIH/3T3 cells using AMPK Beta 1 rabbit monoclonal antibody (STJ11102047, dilution 1:100) (Red). The cells were counterstained with Alpha-Tubulin mouse monoclonal antibody (dilution 1:400) (Green). DAPI was used for nuclear staining (blue). Objective: 100x.



Confocal imaging of MCF7 cells using AMPK Beta 1 rabbit monoclonal antibody (STJ11102047, dilution 1:100) (Red). The cells were counterstained with Alpha-Tubulin mouse monoclonal antibody (dilution 1:400) (Green). DAPI was used for nuclear staining (blue). Objective: 100x.