

## Anti-HMGA1 antibody (1-107) [S6MR] (STJ11102046)

### GENERAL INFORMATION

Product Type	Primary antibodies
Applications	WB/IHC-P/IF/ICC/ELISA/ChIP/ChIP-seq
Host / Source	Rabbit
Reactivity	Human/Mouse/Rat

### PRODUCT PROPERTIES

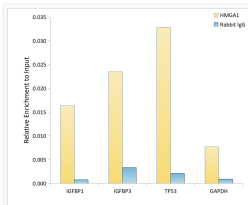
Clonality	Monoclonal
Concentration	Lot specific
Conjugation	Unconjugated
Purification	Affinity purification
Dilution Range	WB:1:1000-1:4000 IHC-P:1:2000-1:8000 IF/ICC:1:100-1:1000 ELISA:Recommended starting concentration is 1 Mu g/mL. Please optimize the concentration based on your specific assay requirements. ChIP:3 Mu g antibody for 10 Mu g-15 Mu g of C
Formulation	PBS with 0.02% Sodium Azide, 0.05% BSA, 50% Glycerol, pH 7.3.
Isotype	IgG
Molecular Weight	Protein Mw: 12kDa Observed Mw: 18kDa
Storage Instruction	Store at-20°C for up to 1 year from the date of receipt, and avoid repeat freeze-thaw cycles.

### TARGET INFORMATION

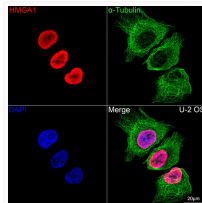
Gene ID	<a href="#">3159</a>
Gene Symbol	<a href="#">HMGA1</a>
UniProt ID	<a href="#">HMGA1_HUMAN</a>
Immunogen Region	1-107
Immunogen Sequence	MSESSKSSQPLASKQEKGD TEKRGRGRPRKQPPVSPGTA LVGSQKEPSEVPTPKRPRGR PKGSKNKGAATRKTTPG RKPRGRPKKLEEEEEGISQ ESSEEEQ
Specificity	A synthetic peptide corresponding to a sequence within amino acids 1-107 of human HMGA1 (P17096).

### ADDITIONAL INFORMATION

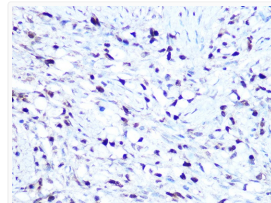
Note **STRICTLY FOR FURTHER SCIENTIFIC RESEARCH USE ONLY (RUO). MUST NOT TO BE USED IN DIAGNOSTIC OR THERAPEUTIC APPLICATIONS.**



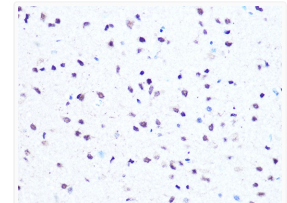
Chromatin immunoprecipitation analysis of extracts from HepG2 cells, using HMGA1 antibody (STJ11102046) and rabbit IgG. The amount of immunoprecipitated DNA was checked by quantitative PCR. Histogram was constructed by the ratios of the immunoprecipitated DNA to the input.



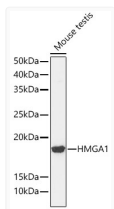
Confocal imaging of U-2 OS cells using HMGA1 Rabbit monoclonal antibody (STJ11102046, dilution 1:100) (Red). The cells were counterstained with Alpha-Tubulin Mouse monoclonal antibody (dilution 1:400) (Green). DAPI was used for nuclear staining (blue). Objective: 100x.



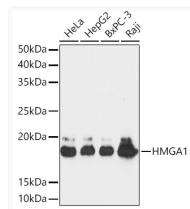
Immunohistochemistry analysis of HMGA1 in paraffin-embedded human oophoroma using HMGA1 Rabbit monoclonal antibody (STJ11102046) at dilution of 1:100 (40x lens). Perform microwave antigen retrieval with 10 mM PBS buffer pH 7.2 before commencing with immunohistochemistry staining protocol.



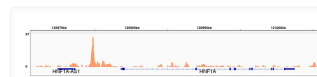
Immunohistochemistry analysis of HMGA1 in paraffin-embedded rat brain using HMGA1 Rabbit monoclonal antibody (STJ11102046) at dilution of 1:100 (40x lens). Perform microwave antigen retrieval with 10 mM PBS buffer pH 7.2 before commencing with immunohistochemistry staining protocol.



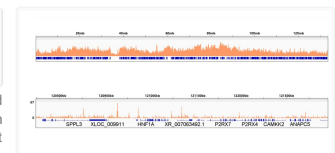
Western blot analysis of lysates from Mouse testis, using HMGA1 Rabbit monoclonal antibody (STJ11102046) at 1:1000 dilution. Secondary antibody: HRP Goat Anti-Rabbit IgG (H+L) (STJS000856) at 1:10000 dilution. Lysates/proteins: 25 Mu g per lane. Blocking buffer: 3% nonfat dry milk in TBST. Detection: ECL Basic Kit. Exposure time: 90s.



Western blot analysis of various lysates using HMGA1 Rabbit monoclonal antibody (STJ11102046) at 1:1000 dilution. Secondary antibody: HRP Goat Anti-Rabbit IgG (H+L) (STJS000856) at 1:10000 dilution. Lysates/proteins: 25 Mu g per lane. Blocking buffer: 3% nonfat dry milk in TBST. Detection: ECL Basic Kit. Exposure time: 30s.



Chromatin immunoprecipitation was performed with 25 Mu g of cross-linked chromatin from HepG2 cells using 5 Mu g of HMGA1 Rabbit monoclonal antibody (STJ11102046). DNA libraries were prepared using Scale ssDNA-seq Lib Prep Kit for Illumina V2 (RK20228). The ChIP sequencing results indicate the enrichment pattern of HMGA1 in the representative genomic region surrounding HNF1A gene.



Chromatin immunoprecipitation was performed with 25 Mu g of cross-linked chromatin from HepG2 cells using 5 Mu g of HMGA1 Rabbit monoclonal antibody (STJ11102046). DNA libraries were prepared using Scale ssDNA-seq Lib Prep Kit for Illumina V2 (RK20228). The ChIP sequencing results indicate the enrichment pattern of HMGA1 across chromosome 12 (upper panel) and the genomic region encompassing HNF1A, a representative gene enriched in HMGA1 (lower panel).