

Anti-PTGS1 antibody (50-150) [S7MR] (STJ11102037)

GENERAL INFORMATION

Product Type	Primary antibodies
Applications	WB/ELISA
Host / Source	Rabbit
Reactivity	Human/Mouse/Rat

PRODUCT PROPERTIES

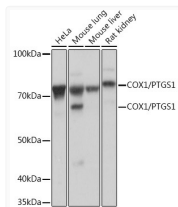
Clonality	Monoclonal
Concentration	Lot specific
Conjugation	Unconjugated
Purification	Affinity purification
Dilution Range	WB:1:1000-1:6000 ELISA:Recommended starting concentration is 1 μ g/mL. Please optimize the concentration based on your specific assay requirements.
Formulation	PBS with 0.02% Sodium Azide, 0.05% BSA, 50% Glycerol, pH 7.3.
Isotype	IgG
Molecular Weight	Protein Mw: 69kDa Observed Mw: 65kDa/72kDa
Storage Instruction	Store at -20°C for up to 1 year from the date of receipt, and avoid repeat freeze-thaw cycles.

TARGET INFORMATION

Gene ID	5742
Gene Symbol	PTGS1
UniProt ID	PGH1_HUMAN
Immunogen Region	50-150
Immunogen Sequence	GLDRYQCDCTRTRGYSGPNCT IPGLWTWLRNLSLRSPSFTH FLLTHGRWFWEFVNATFIRE MLMRLVLTVRSNLIPTSPPTY NSAHDYISWESFSNVSYTR I
Specificity	A synthetic peptide corresponding to a sequence within amino acids 50-150 of human COX1/PTGS1 (P23219).

ADDITIONAL INFORMATION

Note STRICTLY FOR FURTHER SCIENTIFIC RESEARCH USE ONLY (RUO). MUST NOT TO BE USED IN DIAGNOSTIC OR THERAPEUTIC APPLICATIONS.



Western blot analysis of various lysates using COX1/PTGS1 Rabbit monoclonal antibody (STJ11102037) at 1:1000 dilution. Secondary antibody: HRP Goat Anti-Rabbit IgG (H+L) (STJS000856) at 1:10000 dilution. Lysates/proteins: 25 μ g per lane. Blocking buffer: 3% nonfat dry milk in TBST. Detection: ECL Basic Kit. Exposure time: 3s.